

arrive
alive!

Driving in Victoria

Rules and Responsibilities



Published by VicRoads
60 Denmark Street, Kew, Victoria 3101

©Roads Corporation, Victoria,
Australia 2002

Derived from Road to Solo Driving,
copyright Roads Corporation, 2000.
This publication includes Crown Copyright
material from Road Rules – Victoria,
28 October 1999, and amendments.

National Library of Australia
cataloguing-in-publication data:
Roads Corporation.
Driving in Victoria: Rules and
Responsibilities
Includes index.
ISBN 0 7311 9057 2

1. Traffic regulations – Victoria
2. Traffic safety – Victoria
 1. Roads Corporation (Vic)

343.9450946

Several organisations have contributed
to the preparation of this handbook, and
their help is gratefully acknowledged.

This work is the copyright of VicRoads.
Apart from uses permitted under the Copyright Act
1968, no part may be reproduced by any process
without written permission from the General
Manager, Registration and Licensing, VicRoads.

Road laws and legal requirements

Road laws change from time to time. If you
are in doubt, check with any of the VicRoads
Registration and Licensing Offices listed on the
inside back cover.

This handbook sets out various legal requirements
for drivers. These are intended as a guide only.
They do not purport to set out in full all of the
requirements of the law.

For a complete knowledge of the road law, you
should consult the appropriate Acts and Regulations.
Remember that ignorance of what the law says on a
particular subject will not be regarded as an excuse
by the Courts.

Almost everything in this handbook applies to car
drivers. Motorcycle riders should refer to the Victorian
Rider handbook for further information. Much of the
information also applies to pedal cyclists. The word
'driver' is usually used to cover the different road
users and to simplify the language. It does not mean
that one group is more important than the other.



Driving in Victoria

Rules and Responsibilities

Foreword

DRIVING IN VICTORIA: RULES AND RESPONSIBILITIES

Driving in Victoria: Rules and Responsibilities is a guide to the various legal requirements for driving in Victoria.

It is the responsibility of all road users to know and adhere to the rules and regulations for driving on the road. In this context, a driver is someone driving a car, bus, truck or tram, or the rider of a bicycle or motorcycle.

This handbook uses a number of devices to make it easier for you to read and use. These include:

Definition box. Bold words highlighted in **dark green** are followed by a box containing the definition.



Bold words highlighted in **DARK GREEN**, are followed by a box containing the definition.



Hot tip. Next to this icon the text appears highlighted in red to give a suggestion to help you along the way.



Fact file. The text in a yellow box is an important fact you should note.

Road law. When there is a statement of road law, the word “**must**” appears in bold type.

Contents

Rules and responsibilities

• Alcohol	2
• Drugs, medicine and driving	6
• The law about seat belts	8
• Speed limits	10
• Road signs	14
• Road markings	20
• Traffic controls at intersections	27
• Give Way rules	29
• Turning	40
• Freeways	48
• Sharing the road safely	50
– Co-operative driving	50
– Keeping your cool when driving	51
– Sharing the road with other motorists	52
– Sharing the road with pedestrians	57
– Sharing the road with cyclists and motorcyclists	61
– Sharing the road with trams	63
– Sharing the road with buses	66

– Sharing the road with police and emergency vehicles	66
– Sharing the road with trucks and other heavy vehicles	67
– Sharing the road with animals	69
– Railway level crossings	70
• Parking	72
• Penalties	80
• Legal responsibilities	83
• Crash responsibilities	85
• First aid after a crash	86

Resources to help you

• Resources to help you	93
-------------------------	----



Rules and responsibilities

So what are the rules of driving?
There is more to driving than
just knowing the road rules.
However, knowing the basic road
rules is essential.

In the diagrams shown in this
section, the vehicles are coloured
green and red. In all cases, the
red vehicle B must wait for the
green vehicle A.

The rules listed here are only a
summary of some of the road rules
motorists must know. For more
information visit our homepage at
<<http://www.vicroads.vic.gov.au>>
You can also purchase a copy
of *Road Rules – Victoria*, or the
relevant Acts and Regulations
(see *Resources to help you*,
page 93).



*Road law,
it's more than
what you
know . . . it's
how you use
it that is so
important*



ALCOHOL

Learner and probationary drivers must not drive with any alcohol in their blood. This zero BAC also applies to the drivers of taxis, buses and other large vehicles, professional driving instructors and some full licence holders who have previously had an alcohol related driving conviction.

All other full licence holders must be less than **.05 BAC**.



BLOOD ALCOHOL CONCENTRATION (BAC)

is a measure of the amount of alcohol you have in your blood. It is measured by the number of grams of alcohol in 100 millilitres of blood.

For example, a BAC of .05 means .05 grams of alcohol in every 100 millilitres of blood.

The effects of alcohol on driving

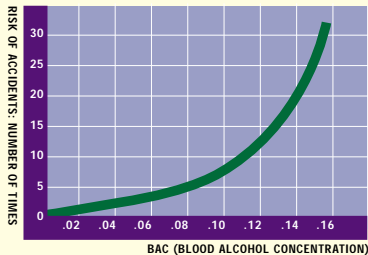
Alcohol affected drivers:

- feel overconfident resulting in risk taking on the road
- are often unaware of the level of their driving impairment
- have slower reflexes and muscle co-ordination making it less likely that the driver will be able to stop or swerve in an emergency
- are less able to process information and make appropriate decisions as their vision, hearing and brain are all adversely affected.

A driver who has been drinking struggles to accurately judge speeds and distances and will often fail to respond to potential

dangers in the traffic environment. The ability to cope with more than one thing at a time is greatly reduced (for example, steer a course within a lane, respond to traffic signals and avoid a pedestrian who suddenly steps onto the road).

What are the risks



RELATIVE CHANCE OF CRASHING AT VARIOUS BACs

The risk of being involved in a crash increases dramatically if the driver has been drinking alcohol. The graph shows the average relationship between the risk of having an accident and the amount of alcohol in the blood. For inexperienced drivers the risk at any BAC level will be even higher.

Factors affecting BAC

Alcohol affects different people in different ways and can even affect the same person on different occasions in different ways. You can drink the same amount of alcohol on different days and have different BAC readings each time.

Some of the factors that lead to a different BAC include:

- gender – a woman drinking the same amount of alcohol as a man of a similar size will have a higher BAC
- body size – a person of small build will have a higher BAC than a larger person drinking the same amount of alcohol
- food consumption – food slows down the absorption of alcohol so, if you have not had a substantial meal before drinking, you will reach a higher BAC more quickly
- rate of drinking and the types of alcohol consumed – the quicker you drink and the greater the alcoholic content of the drink, the sooner you will reach a higher BAC



- general health – if you are in poor health, your liver is less effective in dealing with the alcohol you drink
- use of other drugs – combining alcohol with drugs increases the risk of motor vehicle crashes even if the alcohol is consumed in small doses.

The effect of alcohol can also exaggerate the mood you are in, and make you feel more tired if you are already tired.

Only time reduces your BAC level

Your body takes time to get rid of alcohol. No amount of coffee, exercise, cold showers, fresh air or vomiting will help. Whilst these may make you feel more alert, they don't change the

amount of alcohol in your bloodstream or speed up the processing of the alcohol by your liver. The liver does this in its own time.



It is important to remember that if you have a lot to drink the night before, you are likely to still have alcohol in your blood the next morning.

If you are having a party, help your guests to avoid the drinking and driving problem.

How to avoid the drinking and driving problem

- Plan ahead. It is more difficult to plan how to get home if you have had alcohol to drink – remember, your

judgement will be impaired. So work out your travel arrangements before you start drinking.

- Share a taxi with friends.
- Take public transport.
- Organise with a friend to take turns driving. You and your friend will need to agree not to drink when driving.
- Organise to stay the night.
- Arrange to be picked up by a relative or friend who hasn't been drinking.

Public breath tester

You can measure your BAC level by using a public breath tester. These are located in some hotels and are useful to determine your BAC level. You would need to do this a number

of times to get an idea of what BAC your usual pattern of drinking leads to, and how long it takes for your BAC to go down to zero. Do not attempt to do this if you are intending to drive.



If you drive after drinking your driving will suffer – so remember, the safest BAC is zero even when you have a full licence.

Breath testing procedures

Police can request the driver of a vehicle to undergo a breath test at any time. There are many breath testing stations or booze buses patrolling Victorian roads. You may also be stopped by police in other vehicles and asked to undergo a breath test. Thousands of drivers are randomly tested every week.

You will be asked to blow into a small device. It will immediately give an indication of the alcohol in your blood – if any. If you haven't been drinking there is no problem. If you have a positive result, you will be asked to do a second test on another breath testing instrument. This reading will be used as evidence if you are over the legal limit.

Drivers admitted to hospital after any kind of road crash are required to allow a blood sample to be taken.

Penalties

The penalties for exceeding the BAC laws are tough – regardless of whether you are a learner permit driver or a full driver.

Learner and probationary drivers who record a BAC reading between zero and .05 will have their permit or licence suspended for at least one month.

If you record a BAC of .05 or over you will lose your licence for at least 6 months for a first offence. For a BAC higher than .10 the periods are longer. Heavy fines can also be imposed.



REFUSING A BREATH TEST IS AN OFFENCE.
Your licence will be cancelled and you will be disqualified from driving for at least 2 years if convicted.





DRUGS, MEDICINE AND DRIVING

Medicines and illegal drugs that can affect safe driving are detected in over 25% of Victorian driver fatalities. In Victoria it is an offence to drive a motor vehicle while impaired by a drug. Police can require a driver, whom they believe to be impaired, to undergo an assessment of impairment and can take the driver to a police station to do so. A blood sample and/or urine sample may be required as a result of this assessment.

Illegal drugs

Illegal drugs such as ecstasy, cannabis (marijuana) and heroin can affect your ability to safely control a vehicle.

Drugs like speed or ecstasy can make you feel as if you are a better driver. Unfortunately, as your confidence goes up, your driving skills go down, making you a danger to yourself and everyone else on the road. It is extremely dangerous when the effect wears off, as you are likely to experience sudden, uncontrollable sleep.

Some illegal drugs present special problems. Cannabis, for example, can make you unable to respond quickly enough to what other drivers are doing. This can have serious

consequences – for instance, having to stop suddenly or to respond to the actions of other vehicles or pedestrians. Your ability to concentrate and maintain attention, make decisions and to react to unexpected events is greatly reduced. Important road signs may be missed.

In an emergency situation, the risk of a crash is increased, and your ability to avoid the crash is reduced. Combining even small amounts of cannabis and alcohol causes much greater impairment than either one on its own.

Medicines

Many prescription medicines and some medicines bought over the counter from a pharmacist can impair your driving and increase the risk of crashes by affecting your:

- mood
- concentration
- coordination, and
- reaction time.

Some examples of prescription medications that can affect driving are:

- sleeping tablets
- muscle relaxants
- sedatives
- antihistamines (such as in hay fever or cold and flu medicines)

- some strong painkillers.

Not everyone will experience the effects of a drug in the same way. When you start using a new medicine which may affect your driving, it is best not to drive until you understand and have experienced what effect it actually has on you. Most medicines have no effect on safe driving. Your doctor or pharmacist will be able to give you advice about this.

How to reduce the risk of a crash when on medication

- Do not use alcohol with your medicines.
- Keep to the prescribed doses.
- Do not treat yourself with additional medicines or other remedies. Always check with your doctor or pharmacist.
- Do not use other people's medicines.
- Read the labels on all your medicines and heed their advice. Check with your doctor or pharmacist if the label on your medicine states that the medicine may cause drowsiness.



If you're out of shape, your driving will be as well



If you are worried about the effect that your medicine has on your driving, stop your driving – not your medicine!

Stop driving and contact your doctor or pharmacist if your medicine:

- affects your reflexes
- affects your ability to concentrate
- makes you sleepy or drowsy
- gives you blurred or double vision.

If you have to continue to use medication that affects your driving in some way, plan ahead before you drive, or use alternative transport such as taxis or public transport, or call on a friend to drive you.

THE LAW ABOUT SEAT BELTS

Wearing a seat belt is the most effective measure for reducing serious injury in a crash. It is because seat belts are so effective that all drivers and passengers should wear a seat belt or appropriate restraint regardless of where they sit in the vehicle. This includes children and pregnant women.

Seat belts must be securely fastened and properly adjusted if they

are to do their job in a crash. You should never put more than one person in a restraint.

Adult seat belts are not designed to protect small bodies in a crash. Children need restraints that specifically fit their size and weight.

It is illegal to travel in the load area of any vehicle (for example a van or station wagon) unless using a properly constructed seat and correctly fitting seat belt or child restraint.

Children

Drivers **must** ensure that:

- babies under one year old are carried in an approved child restraint, correctly installed and adjusted to fit the baby
- passengers under 16 years are properly restrained by a seat belt or by a child restraint suitable for their size and weight.

Child restraint guidelines:

- infant restraints are suitable for babies up to 9 or 12 kgs
- child car seats are suitable for children 8 to 18 kgs
- booster seats are suitable for children between 14 to 26 kgs
- child harnesses can be used without a booster until

children weigh 32 kg and are recommended if children are using a lap only seat belt.



Restraint Fitting Stations can help you fit a child restraint.

Phone 1300 360 745 for the nearest location.

Restraints and air bags

A rearward facing restraint should not be used if the restraint is in a position where it will be hit by an exploding air bag.

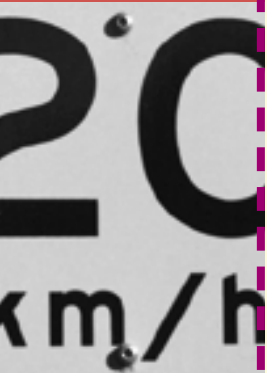
Children using forward facing car seats or boosters in the front seat of a vehicle should do so with the seat pushed as far

away from the dashboard as possible.

If a vehicle has air bags in other positions, consult the vehicle owner's manual for advice on positioning restraints.

More information about choosing and using restraints and Restraint Fitting Stations is available from VicRoads Registration and Licensing Offices and the VicRoads web site
<<http://www.vicroads.vic.gov.au>>.





Pregnant women

Seat belts protect both pregnant women and their unborn babies. The belt will not harm the baby if the lap part of the belt is below the bulge, the sash passes between the breasts and the buckle is fastened down by the hips. An unborn baby is more at risk in a crash if a seat belt is not worn.



Buckling up takes seconds – serious crashes take lives.

SPEED LIMITS

Speed limit signs tell you the maximum speed you can drive in normal conditions. You must always obey them by not exceeding the speed shown.

Built-up areas

The speed limit in a **built-up area** is 50 kilometres per hour (km/h) unless signed otherwise.



A **BUILT-UP AREA** is where there are buildings and/or houses next to the road or there is street lighting at intervals not over 100 metres apart for a distance of 500 metres or more.

Speed limited areas

There are other signs which designate speed limits for whole areas (networks of roads) which have a sign on each road into the area.



Freeways and country roads

The speed limit on freeways and outside built-up areas in Victoria is 100 km/h unless signs tell you otherwise.



Shared zones

Shared zones have a speed limit of 10 km/h or as indicated on the Shared Zone sign. In a shared zone, drivers **must** give way to pedestrians.



Safe speeds for different needs

There is no one best speed. Speed limit signs tell you the maximum speed you **must** not drive beyond. You have to decide what is a safe speed within the specified limit. Here are some factors you should consider.

Light or heavy traffic

If there is a lot of traffic, slow down to the average speed of everyone else and watch out for hazards. Pedestrians often weave through cars stuck in peak hour 'crawls'.

Shops, parked cars and people

Where there are shops, there are people and cars. Be alert. Children can run out from between parked cars, and parked cars can pull out from the kerb suddenly. Watch your speed, slow down and try to anticipate what others may do.

Green lights can change to red

A green light may turn red before you enter an intersection, so drive at a speed that will allow you to stop.

Unpredictable surfaces

Loose gravel can be very dangerous to drive on – even for experienced drivers – so slow down.

Country roads and animals

When you see animals – beware. They are unpredictable and can wander or dart onto the road. Farmers often move sheep or cattle and you need to slow down while you are passing (see *Sharing the road with animals*, page 69).

The time of the day

It can be difficult to see the road ahead when you are driving into bright sunlight at dawn or dusk. You will need to slow down. Wear sunglasses and use the sun visor in your car.

Weather conditions

Driving in heavy rain, frost or snow can be very dangerous –

it may be difficult to see and roads may be slippery. You need to slow right down, or in some cases, pull over off the road and wait for the conditions to improve. Take care when mist or fog affects visibility. You may need to use hazard warning lights or rear fog lights (see *Driving in dangerous conditions or situations*, page 55).

Curving roads

Slow down before entering a curve or bend, then accelerate a little to drive out. It can be dangerous to brake in a curve or bend; you may lose control of your vehicle.

Slippery roads

Slippery roads can be caused by rain, mud, frost or ice.

Not all areas that are slippery when wet are signposted – watch out for others. Rain makes all roads slippery. When rain first begins, oil and dirt are washed to the surface. Until further rain washes these away, skidding can occur. Slow down and always keep your distance from the vehicle in front in poor conditions of any sort.



Slippery when wet

Road works

Slow down, obey the signs and prepare to stop.

How quickly do you think you can stop?

Speed makes a big difference to your ability to stop. If you double your speed, you cover almost 4 times the distance before you stop.



At 60 km/h you may cover up to 67 metres before you can stop.

At 100 km/h you may cover up to 142 metres before you can stop.

This makes a significant difference to your chance of being involved in an accident.



If the vehicle in front of yours stops suddenly, and you are travelling too fast or too close – you will not be able to avoid a crash!

ROAD SIGNS

Road signs are there to provide information to help keep you and others safe on the road.

Regulatory signs

These signs tell you what you **must** or **must not** do. You are committing an offence if you disobey these signs. They are usually black and white, sometimes with red indicating danger or a restriction.



You **must** keep left

However, some regulatory signs are black and yellow:



Beware – pedestrians crossing

Follow these traffic signs

These are signs showing which direction you **must**, or **must not** take.



You **must not** turn left



You **must not** enter this road



You **must** turn left

Stop and Give Way signs

These signs enable drivers to get through intersections and other places safely (see *Giving way to vehicles at intersections*, page 31).



Keep left unless overtaking

Where this sign is shown, or on multi-lane roads where the speed limit is over 80 km/h, you **must** not drive in the right lane unless overtaking another vehicle, turning right, making a U-turn, avoiding an obstruction, or when traffic is congested.



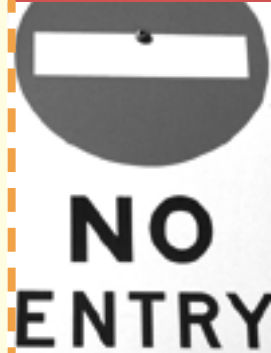
Hand held signs

Hand held signs are often used at work sites. They may also be found at school crossings.

Be prepared to obey the sign.



You **must** stop



Warning signs

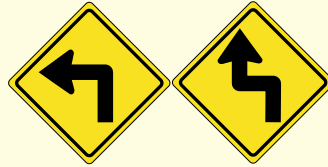
These signs alert you of possible danger ahead. They are usually yellow diamond shapes with black words or symbols. Take notice of the advice these signs give. It usually means slowing down.

Curves and bends signs

Curves and bends signs tell you what to expect – from simple curves, to winding sections and sharp bends.



A normal bend



Sharp bends



A winding section of road

Intersection Warning signs

Intersection Warning signs are used to warn you of the type of intersection ahead, particularly when the **intersection** is dangerous or difficult to see.



An **INTERSECTION** is where two or more roads meet and where vehicles travelling on different roads might collide.

There are many types of intersections.



Cross-road intersection



T-intersection



Staggered side road junction

Intersection control warning signs



Traffic lights ahead



Stop sign ahead



Roundabout ahead

Changing road layout



End of divided road



Two lanes are for oncoming traffic

Advisory speed signs

Advisory speed signs are sometimes used with other warning signs.

The advisory speed sign shows the maximum speed that is safe to drive in good conditions.



Advisory speed sign used with curve warning sign

Changing conditions



Hollow/dip in the road



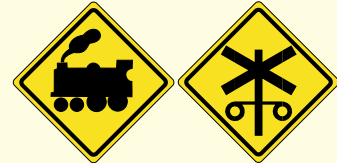
Steep descent



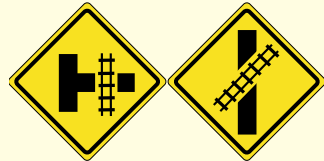
Gravel road

Railway level crossings

When approaching railway level crossings – slow down and be prepared to stop.



Rail crossing ahead



Uncontrolled crossings ahead

Pedestrian signs

These signs warn drivers of pedestrians crossing the road.



Pedestrians crossing



Children crossing

Road work signs

These are usually temporary signs warning drivers to slow down and drive carefully because there are road works ahead.



Left lane ends, prepare to move (merge) into another lane

**PREPARE
TO
STOP**

Slow down and be prepared to stop



Workers on the road ahead



You may proceed slowly





Direction signs

These standard green signs with white lettering are common throughout the state. They give information such as road names, destinations along a route and distances to the destinations.



ROAD MARKINGS

It is important to be able to 'read' the white or yellow markings on the road. Road markings can create regulatory requirements which you must obey and are there to provide a safer driving environment.

Centre of the road lines

Many roads are painted with broken white lines and single continuous lines in the centre of the road.

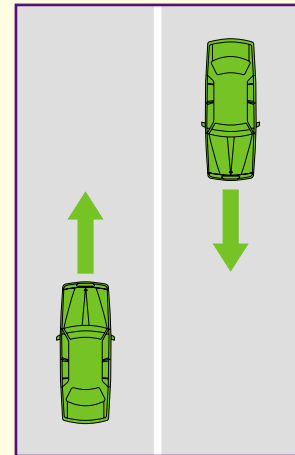


FIGURE 1

Single continuous lines

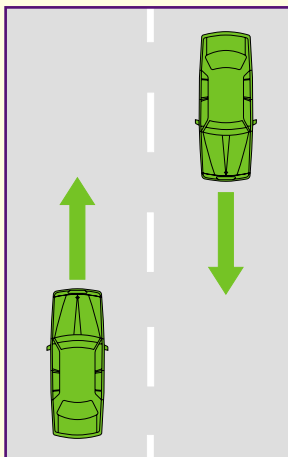


FIGURE 2

Broken white lines

In Figures 1 and 2 you **must** keep left of the lines and drive as close to the left side of the road as you can. You may cross these lines to enter or leave the road, but only overtake if the road ahead is clear.

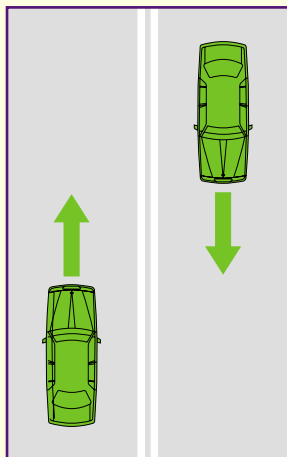


FIGURE 3

Double continuous white lines

You **must** always keep left of these lines. Do not cross them to overtake or to do any turn. You **must** not park opposite double continuous lines.

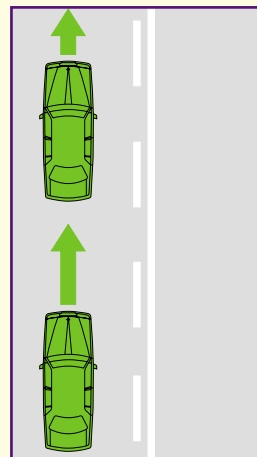


FIGURE 4

Double white lines with a broken line closer to you

You may cross these lines to overtake, or to enter or leave the road, but only overtake if the road ahead is clear.



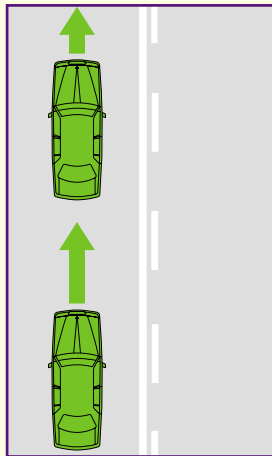


FIGURE 5

Double white lines with a continuous line closer to you

You **must** always keep to the left of these lines. Do not cross them to overtake or do any turn. You **must** not park opposite the continuous line side.

Lane markings

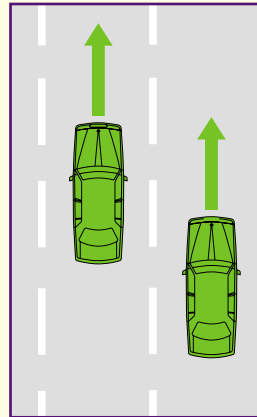


FIGURE 6

Broken white lines separating lanes

Broken white lines separate lanes of traffic going in the same direction. You may change lanes if you signal, and if it is safe to do so. Remember, you **must** give way to any vehicle already in that lane. You **must** drive with your vehicle completely within a lane.

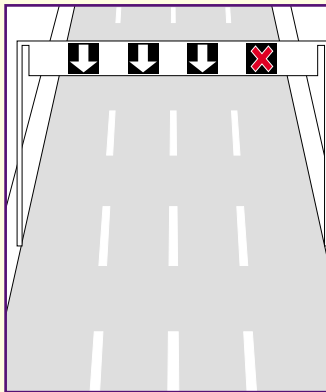


FIGURE 7

Overhead lane signals

If overhead lane signals are in use, travel in the lanes over which there is a green or white arrow. You **must** stay out of lanes with a red X.

Roads without marked lanes

Where there are no lane markings, if there are two or more lines of traffic travelling in the same direction, you may change from one line of traffic to another if you signal, and if it is safe to do so. However, you may only pass another vehicle on the left side when it is turning right.

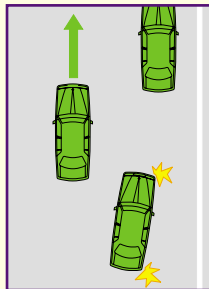


FIGURE 8

Special purpose lanes

Special purpose lanes include bicycle lanes, bus lanes, transit lanes and tram lanes. Signs and/or road markings are used to set aside lanes for special vehicles. If specified on the signs other vehicles may use these lanes. Drivers **must** keep out of these lanes during the times marked on the signs or, if no time is specified, at all times. However, you may travel in these lanes for up to 100 metres (50 metres in a bicycle lane), when preparing to enter or leave the road, or to avoid an obstruction or turning vehicle.





Tram lanes

For trams and public buses only.
(See *Sharing the road with trams*, page 63).

Bus lanes

For buses and other vehicles
as specified on a sign.

Bicycle lanes

For cyclists only, and for
parking unless prohibited by
signs. If you need to turn left
from the road, you may drive
along the bicycle lane within
50 metres of your turn off point.
You should be courteous to
cyclists. You **must** give way to
cyclists in a bicycle lane, and
only move into a bicycle lane
when it is safe to do so.



Transit lanes

During times specified on
the signs, transit lanes are
for buses, taxis, motorcycles,
trams and vehicles carrying
two or more people (T2 sign),
or three or more people (T3 sign).



If you need to turn out of
a transit lane, you can
enter the lane within
100 metres of your turn off point.

Traffic lane arrows

Arrows are painted on the road at some intersections. They tell you the direction traffic in each lane **must** go. If two directions are shown, you may go either way. You **must** not go in a direction other than that indicated by the arrows.

Arrows may also be applied to bicycle lanes. Sometimes a 'head start' area is provided so that cyclists can be seen by drivers when stopped at red traffic lights.

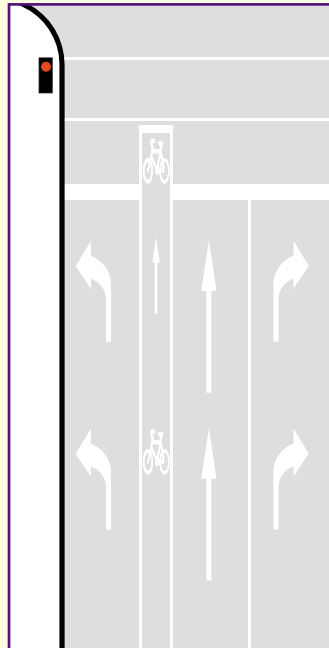
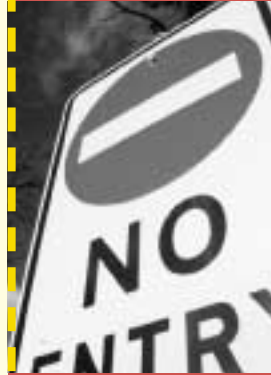


FIGURE 9

Painted traffic islands

Traffic islands are sometimes painted on the road before a right turning lane. You can drive over the painted island or stop to wait on it, as long as there are no double lines outlining the island on the left, but you **must** give way to any vehicle in a turning lane or entering a turning lane from a marked lane (see *Figure 10* on page 26).



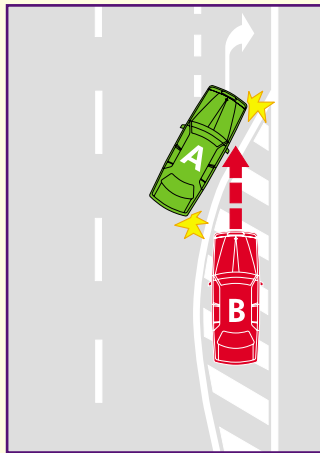


FIGURE 10

Red vehicle B must give way to green vehicle A

Give Way line markings – with or without Give Way signs

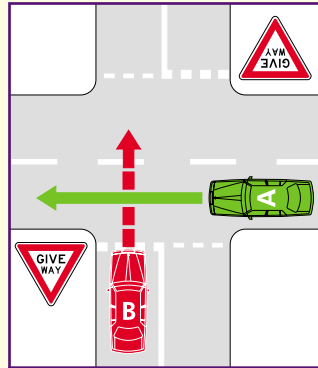


FIGURE 11

Red vehicle B must give way to green vehicle A

(See Giving way to vehicles at intersections, page 31).

Stop line markings – with or without Stop signs

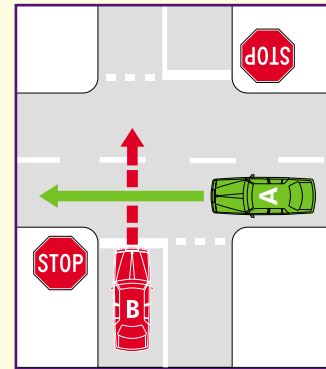


FIGURE 12

Red vehicle B must give way to green vehicle A

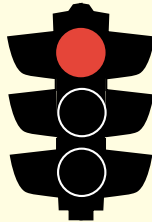
(See Giving way to vehicles at intersections, page 31).

TRAFFIC CONTROLS AT INTERSECTIONS



Half of all crashes happen at intersections. Stay alert and obey the intersection rules.

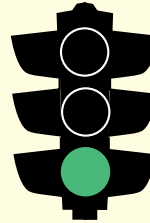
Traffic lights



*Red means you **must** STOP.
Do **not** enter the intersection.*



*Yellow means STOP unless
you are unable to do so safely.*



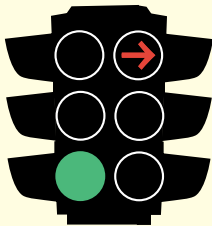
*Green means you may enter
the intersection, but only if you
do not block the intersection.*



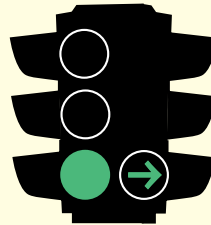


Traffic lights with arrows

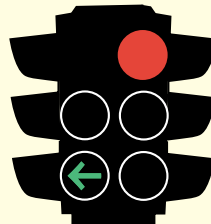
Traffic lights with arrows make turns easier. If the arrow pointing in the direction you want to go is red, you **must** stop; if the arrow is green you may proceed in the direction it is pointing if it is safe to do so.



You **must** not turn right



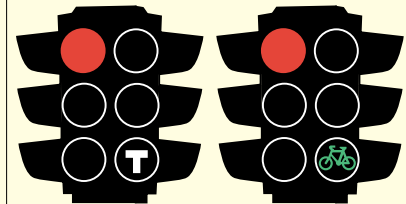
You may turn right



You may turn left

Traffic lights for trams, buses and bicycles

Some traffic lights signal a white T or B on a black background. These are used for trams and buses at some intersections. Some traffic lights may have red, amber and green bicycle lights for use by bicycles. Other road users **must** wait for the normal green light.



Tram may go. Bicycle may go.
You **must** wait. You **must** wait.

Pedestrian signals

Turning vehicles **must** always give way to pedestrians who are crossing the road they are turning into (whether or not there is a green 'walking figure' facing the pedestrian).



Traffic control signs

Stop and Give Way signs are used for safety control at many intersections and other places.



(See *Giving way to vehicles at intersections*, page 31).

GIVE WAY RULES

There will be many times when you are driving that your path crosses that of other road users. When this happens, one or more of the people involved must **give way** in order to avoid a collision.



To **GIVE WAY** means that if there is a danger that your vehicle could collide with another vehicle, person or animal you must slow down and, if necessary, stop to avoid a collision. If you are stationary, you must remain stationary until it is safe to proceed.

Here are some everyday driving situations when you will be required to give way.





Giving Way to Pedestrians

There are a number of driving situations when you **must** give way to pedestrians.

At pedestrian crossings

You **must** give way to any pedestrian on a pedestrian crossing, and you **must** not overtake another vehicle which has stopped at a pedestrian crossing.

At intersections

When turning left or right at any intersection (except a roundabout), you **must** give way to any pedestrians crossing the road you are turning into.

In slip lanes

You **must** give way to any pedestrians in a **slip lane**.



A **SLIP LANE** is an area of road for vehicles turning left that is separated, at some point, from other parts of the road by a painted island or traffic island.

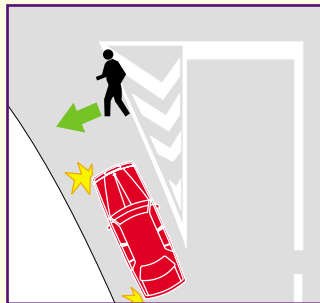


FIGURE 13

At children's crossings

(See *Sharing the road with pedestrians*, page 57).

On the footpath

When entering the road from a driveway or adjacent land, you **must** give way to pedestrians on any footpath, path or nature strip you cross to enter the road. You **must** also give way to bicycles or other vehicles on the footpath, path or nature strip.

This also applies when leaving the road to enter a driveway or adjacent lane.

In shared zones

In a shared zone shared by both vehicles and pedestrians, you **must** give way to pedestrians (see *Speed limits*, page 10).

At Stop or Give Way signs or lines not at intersections

You **must** give way not only to vehicles, but also to any pedestrian at or near the sign or line. This would include pedestrians as well as bicycles crossing in front of you on a shared path.

When making a U-turn

You **must** give way to all pedestrians as well as vehicles when making a U-turn.

At tram stops

When passing a stopped tram you **must** give way to any pedestrians crossing between the tram and the left side of the road.

Giving way to vehicles at intersections

Stop or Give Way signs or lines at an intersection

After stopping at a Stop sign or line, or when facing a Give Way sign or line at an intersection, you **must** give way to any vehicle in, entering or approaching the intersection except:

- a vehicle making a U-turn
- a vehicle turning left using a slip lane
- an oncoming vehicle turning right if that vehicle is also facing a Stop or Give Way sign or line.





When the law refers to **VEHICLES**, this includes not only motor vehicles but also horses and bicycles.

The Give Way rules apply equally for these smaller vehicles.

You could be charged just the same for failing to give way to a horse or a bicycle as for failing to give way to a truck!

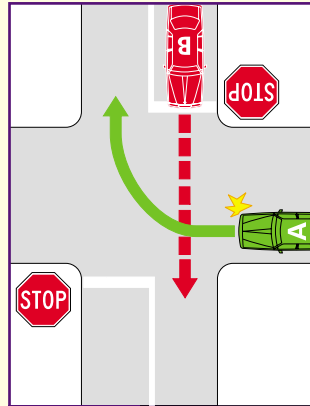


FIGURE 14

*Red vehicle B **must** stop and give way to green vehicle A, which is not facing a Stop or Give Way sign*

Giving way at intersections (except T-intersections or roundabouts)

If there are no traffic lights or signs or lines at an intersection, you **must** give way to any vehicle on your right.

*In Figures 15 to 18, red vehicle B **must** give way to green vehicle A*

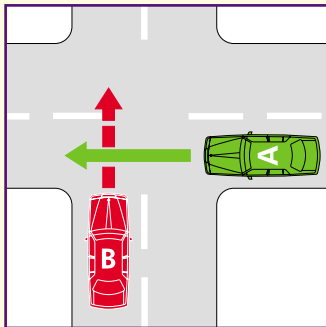


FIGURE 15

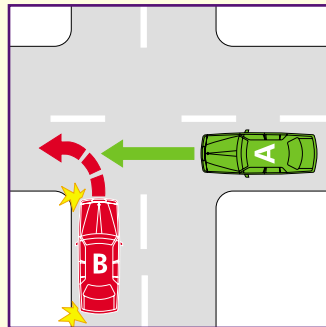


FIGURE 17

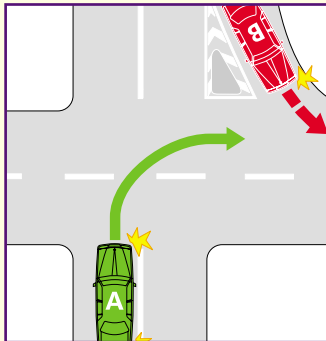


FIGURE 16

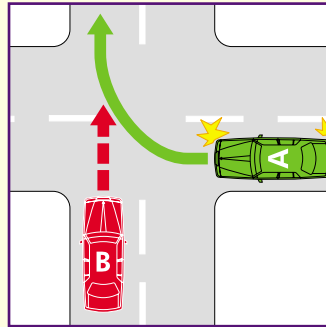


FIGURE 18

If you are turning right at an intersection without traffic lights or signs or lines, you **must** also give way to oncoming vehicles going straight ahead or turning left (except if they are turning in a slip lane) as well as any vehicle on your right.

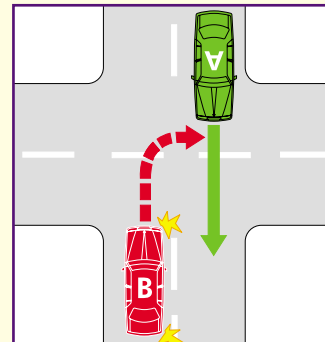


FIGURE 19

*Red vehicle B **must** give way to green vehicle A*





Giving way at T-intersections



A **T-INTERSECTION** is where two roads meet and one of them ends.

T-intersections may not always form a regular T



The Give Way rule is the same for all T-intersections. When you enter the continuing road from the road that ends, you **must** give way to vehicles travelling along the continuing road.

These diagrams show how to give way at T-intersections without lights or signs, or when traffic lights have failed or are flashing yellow.

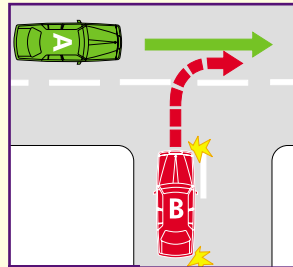


FIGURE 20

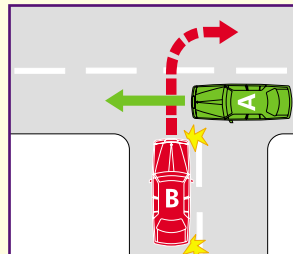


FIGURE 21

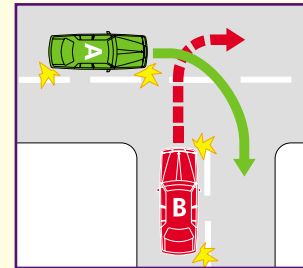


FIGURE 22

In Figures 20, 21 and 22, the red vehicle B **must** give way to green vehicle A

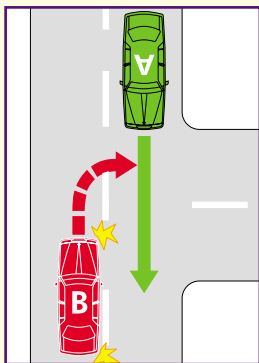


FIGURE 23

*When you turn right from the continuing road into the road that ends, you **must** give way to oncoming vehicles*

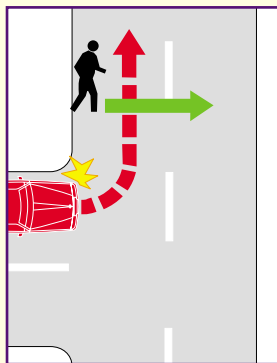


FIGURE 24

*The red vehicle **must** give way to the pedestrian*

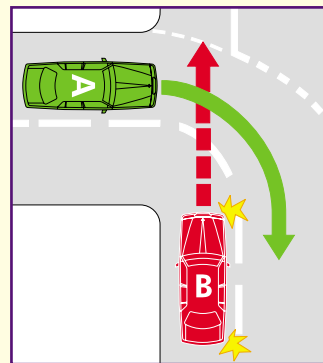


FIGURE 25

*Some T-intersections are modified so that the continuing road goes round a corner. The road that ends is marked by a continuity line and Give Way or Stop lines or signs. In Figure 25, the red vehicle B is leaving the continuing road to enter the road that ends at the intersection. The red vehicle B **must** give way to the green vehicle A.*



Giving way at roundabouts

When entering a **roundabout**, you **must** give way to:

- all vehicles already in the roundabout
- all trams entering, or approaching the roundabout.

Take care to look out for motorcyclists and cyclists already in the roundabout who may be harder to see.



A roundabout sign

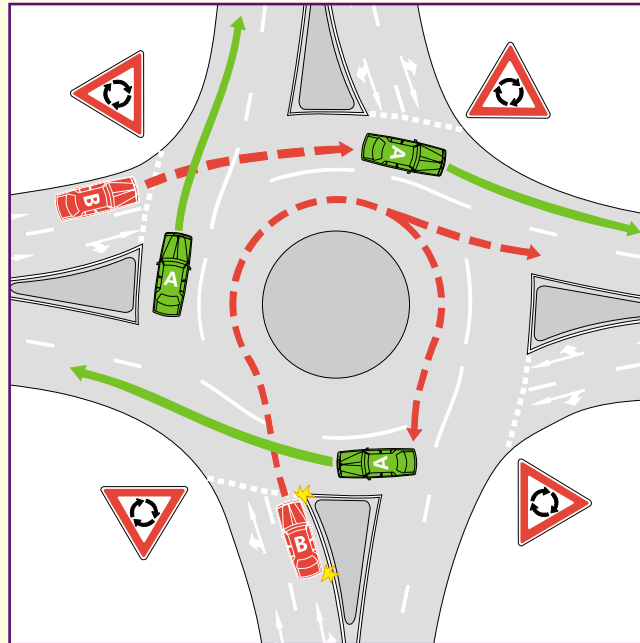


FIGURE 26

*Always give way to vehicles already on the roundabout. In this diagram, the red B vehicles **must** give way to the green A vehicles. Enter only when there is a safe gap in the traffic.*



A **ROUNDAABOUT** is an intersection with a roundabout sign at each entrance, a central island and one or more marked lanes, or lines of traffic, all of which have vehicles travelling in the same direction. You must always keep to the left of the central island.

Cyclists and animal riders

In a roundabout, cyclists and animal riders have the option of turning right from the left lane, but they **must** give way to drivers exiting the roundabout.

Giving way on divided roads

When a two-way road is divided by a **median strip**, a Give Way or Stop sign applies to the whole of the intersection.



A **MEDIAN STRIP** is a dividing strip on the road designed to separate vehicles travelling in opposite directions.

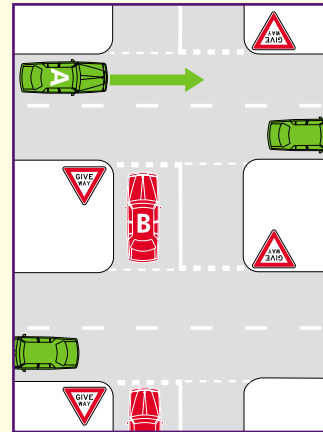


FIGURE 27

*The red vehicle B **must** give way to the green vehicle A.*

Turning from a divided road

When turning from a divided road, you **must** obey the signs on the road you are turning from. Normally a vehicle in the same position as the red vehicle B could continue if it is safe to do so. However in Figure 28 the red vehicle B is facing a Stop Here On Red Signal sign, therefore it **must** stop until that signal is green. If there is no sign, you **must** give way to traffic when entering a road from a break in the median strip after turning.

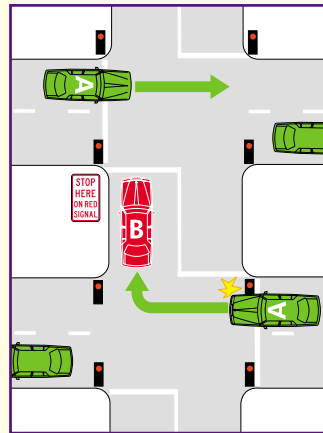


FIGURE 28

Other driving situations when you are required to give way

U-turn

When making a U-turn you **must** give way to all other vehicles and pedestrians.

Entering the road

Whenever you enter the road from a driveway or adjacent land, you **must** give way to all vehicles and pedestrians.

Entering the traffic stream

Whenever you enter the traffic stream from a parked position, or through a break in a median strip, you **must** give way to all vehicles travelling on the road.

Changing lanes

Whenever you change lanes from one marked lane or line of traffic to another, you **must** give way to vehicles already in that lane or line of traffic. This includes whenever you cross over any broken line marked on the road which indicates that a lane ends, for example when merging into freeway traffic.



HOT TIP Make a headcheck whenever you are changing lanes or pulling out from the kerb, but don't take your eyes off the road ahead for more than a second.

Zip merging

If you are on a road where there are no lines marked and the road is such that two rows of vehicles must merge into one, you **must** give way to any vehicle which has any part of its vehicle ahead of yours. This is called **zip merging**. Note: if you cross any lines marked on the road, then you are not zip merging but changing lanes, and **must** give way accordingly.



When two lanes of traffic merge into one and there are no lane markings, this is sometimes called **ZIP MERGING**.

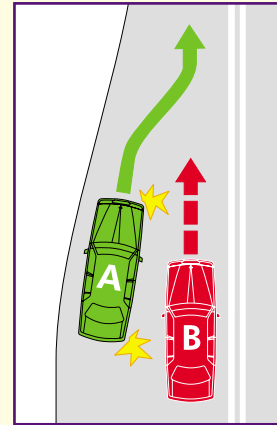


FIGURE 29

Red vehicle B **must** give way to the green vehicle A





Police directions

You **must** always follow instructions from a member of the Police Force or authorised person rather than any other traffic control signal or rule.



HOT TIP Remember, road users can make mistakes about who should give way. Never assume the other driver has seen you or will give way to you. Always make eye contact, and proceed carefully.

TURNING

Plan your turns well in advance. Move into the correct lane long before you need to turn.

Use the indicators to give other road users plenty of warning.

Making turns

Signalling your moves

Always use your indicators to let others know you are about to turn or change lanes.

The signal **must** be given for long enough to warn others that you are about to change lanes or direction. You **must** signal for at least 5 seconds when moving from a stationary position at the side of the road or from a median strip parking area.

Making right turns

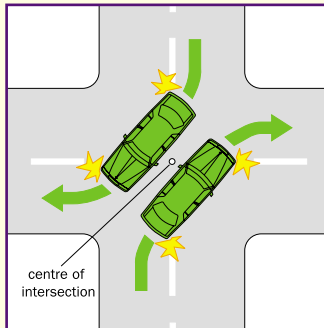


FIGURE 30

To make a right turn you **must**:

- approach the intersection as close to the centre of the road as possible
- turn just right of the centre of the intersection.

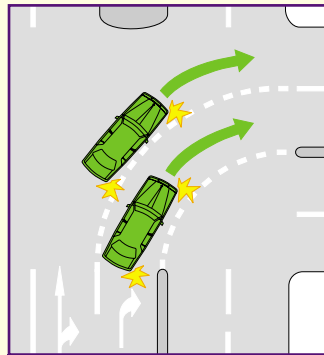


FIGURE 31

Right turns on multi-lane roads

On some multi-lane roads, arrows painted on the road will show you if right turns may also be made from other lanes.

If road markings indicate how a turn is to be made, you **must** make a turn as indicated by the road markings.

Making left turns

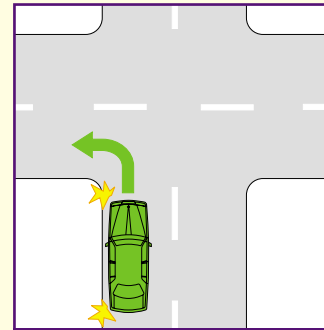


FIGURE 32

To make a left turn you **must** approach the intersection as close to the left side of the road as possible.

Where there is a slip lane, you **must** turn using the slip lane (see *slip lane* definition, page 30).



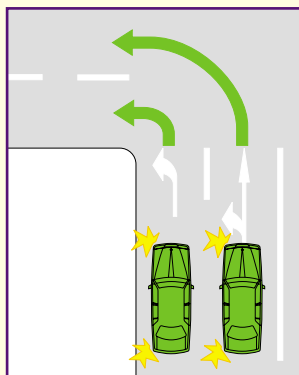


FIGURE 33

Left turns on multi-lane roads

For a multi-lane road, arrows painted on the road will show you if left turns may also be made from other lanes. **But look out for cyclists on your left who may be going straight ahead.**

If road markings allow turns from more than one lane, it is

advisable that you stay in the same lane as you go from one road to the other.

Exception to the turning rules

Trucks or vehicles over 7.5 metres long displaying a Do Not Overtake Turning Vehicle sign may use more than one lane to turn (see *Sharing the road with trucks*, page 67).

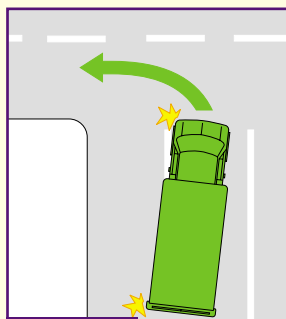
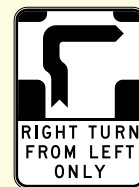


FIGURE 34

Hook turns



Hook Turn signs are found at some intersections in Central Melbourne. The signs may be at the side of the road or hung from tram wires, so be alert in checking for these signs.



Hook Turn sign

A driver turning right at an intersection with traffic lights and a Hook Turn sign **must** turn right by making a hook turn as shown in Figure 35.

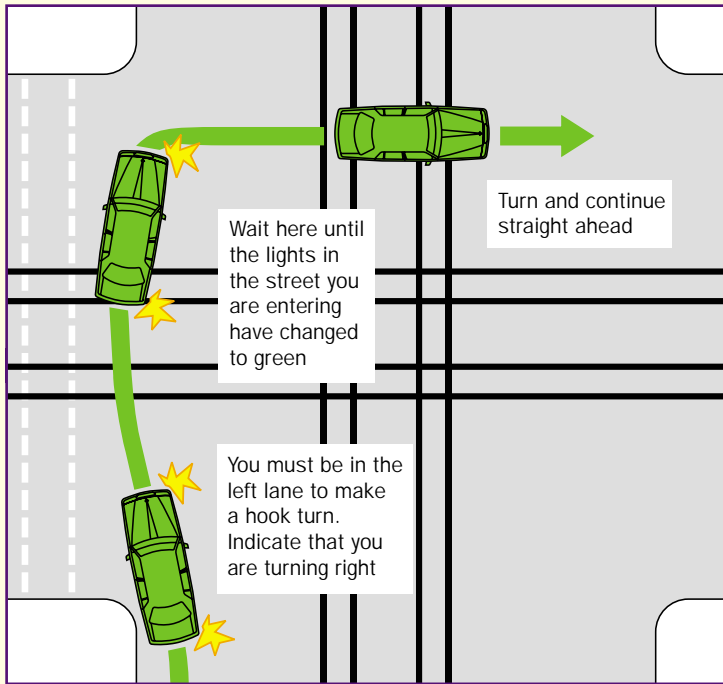


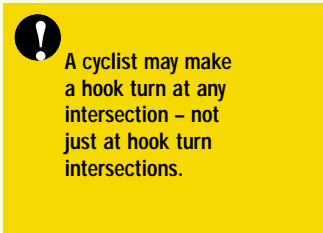
FIGURE 35

Doing a hook turn – turning right from the left lane

To make a hook turn, you **must**:

- 1 Approach and enter the intersection from as near as possible to the left.
- 2 Move forward, keeping clear of any marked foot crossing, until your vehicle is as near as possible to the far side of the road that you are entering.
- 3 Remain at the position reached under Step 2 until **the traffic lights on the road you are entering have changed to green.**
- 4 Turn right into the road and continue straight ahead.





U-turns

When making a U-turn you **must**:

- have a clear view of traffic in either direction
- complete your U-turn without disrupting other traffic
- signal your intention for a reasonable time
- give way to all other vehicles and pedestrians.

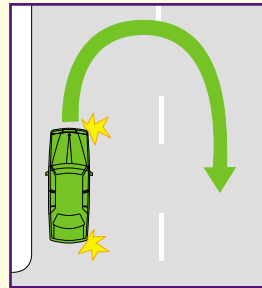


FIGURE 36

Where there is no median, it is advisable that the U-turn be made from the left side of the road. Remember to watch out for traffic approaching from behind you.

You **must** not make a U-turn:

- over double lines or where there is a No U-turn sign, (if the sign is not at an intersection continue on until you reach an intersection before you make a U-turn)



No U-turn sign

- at an intersection where there is a No U-turn sign



No Right Turn sign

- at a No Right Turn sign unless there is a U-turn Permitted sign.

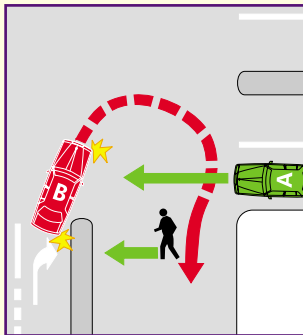


FIGURE 37

Where there is a median, the turn **must** be made from the right lane.

Turning and one way roads

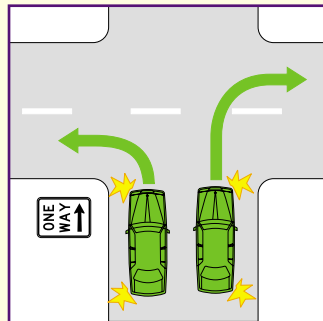


FIGURE 38

Turning from one-way roads

When turning left or right from a one-way road into a two-way road, you **must** turn from a position close to the side you are turning towards.

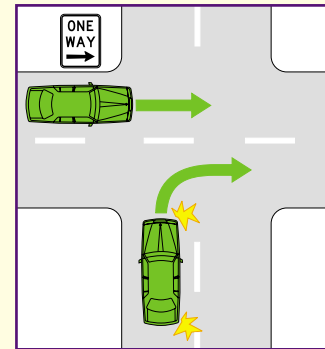


FIGURE 39

Turning into one-way roads

When turning left or right from a two-way road into a one-way road, it is advisable to turn into the nearest lane.





Making turns at roundabouts

A roundabout is considered to be a special type of intersection, so different rules apply. The Give Way rules on page 36 explain what you **must** do when entering the roundabout and who should give way.

Sometimes, roundabouts have more than one lane. You need to follow these rules about turning left or right or going straight ahead.



Decide before you enter the roundabout if you are going to turn right, left or go straight ahead.

Turning left

Approach in the left lane and stay in that lane.

Signal a left turn on your approach to the roundabout and keep the signal on until you have left the roundabout.

Going straight ahead

Approach the roundabout in the left or right lane.

Drive in the same lane through the roundabout.

Do not signal on your approach to the roundabout, but if practical, signal left as you exit.



Cyclists and animal riders may make a right turn from a left lane.

Turning right

Always approach the roundabout in the right lane.

Drive close to the centre of the roundabout and follow the right lane as you leave.

Signal a right turn on your approach, and signal left, if practical, just before the exit you are turning into, keeping the signal on until you have left the roundabout.

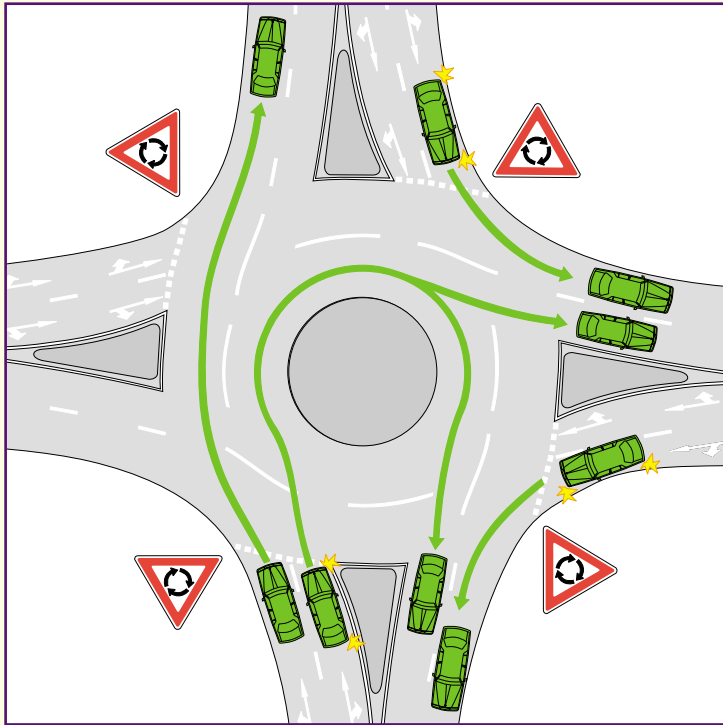


FIGURE 40



Where arrow(s) are marked on the road before or in a roundabout you must drive in the direction of the arrow(s). Make sure you obey them.





FREEWAYS

As freeway speeds are often high and the traffic is heavy, there are special rules that apply when driving on a freeway.

Entering a freeway

- Adjust your speed as you drive along the entry ramp to match that of the freeway traffic.
- Clearly indicate your intentions.
- Where there is a large enough gap, merge smoothly with the freeway traffic.



Exiting a freeway

- Watch for signs that tell you that you are approaching an exit ramp. Exit lanes are usually on the left.
- Maintain your speed and signal your intention to exit well in advance.
- Adjust your speed once you have entered the exit ramp.

If you miss your exit, continue travelling on the freeway until you reach the next exit. You should not reverse on a freeway.



Overtaking lane

Be extra alert on freeways as traffic travels at high speed. You **must** not drive in the right lane unless overtaking or unless all lanes are congested. This rule also applies to the right lane used by all traffic, if the lane to the right of that is a **transit lane**.



A **TRANSIT LANE** is marked by a Transit Lane sign, and may only be used by public buses, motorcycles, taxis or where applicable, vehicles carrying at least one or two other people.

Stopping

You **must** not stop on a freeway except in an emergency. If you **must** stop, move to the emergency lane or shoulder of the road and put on your hazard warning lights.

Tollways



TOLLWAYS are sections of road where the driver must pay to use it. Signs are displayed to advise drivers that they will soon be entering the tollway.



Start tollway sign

You are entering a tolled section of road.





Advance warning tollway entrance sign

You are about to enter the tollway from a non-tollway road. If you do not want to enter the tollway, take the next exit.

SHARING THE ROAD SAFELY

As a driver you share the road with many other people:

- other drivers of cars, vans, trucks, buses and trams
- pedestrians
- motorcyclists
- cyclists.

Co-operative driving

We all have places to get to and want to arrive there safely. The best way to make this happen is to co-operate and help each other. It doesn't really hurt or waste any time to let somebody in from a side street, when the traffic is crawling along.

Other simple strategies include:

- not blocking intersections
- always using your signals when turning or changing lanes
- not following too closely behind
- smoothly controlling your speed rather than driving in a fast start/stop manner
- changing lanes correctly.

Remember that co-operation is not just limited to other car drivers. You are also sharing the road with pedestrians, cyclists, motorcyclists, trucks, buses and trams.

There are times and places when co-operation is essential. These include places where:

- two lanes have to merge
- the left lane ends
- extra lanes exist just before and after intersections
- overtaking lanes or divided roads end.

In these places, the need for co-operative driving is at its greatest.



Co-operative driving helps you to be a 'green driver'. There is a relationship between driving style and the impact your driving has on the environment. Drive smoothly and avoid fast start/stop driving – you'll save fuel and pollute less (and save money as well!). Even better leave the car at home and walk, ride your bike or use public transport!

Keeping your cool when driving

Road rage is dangerous and illegal. It involves people losing their cool, perhaps in response to a mistake or action of another driver. You can avoid road rage easily.

- The fundamental rule is don't retaliate – it's never worth it!
- If you make a mistake while driving, acknowledge it.
- Don't take the mistakes of other drivers personally – remember it's a mistake not a personal attack.
- Keep your cool and keep your distance!
- Drive cooperatively and consider the other people on the road!



Co-operate to keep your cool and you'll be a winner



Sharing the road with other motorists

Keeping to the left

On multi-lane roads with a speed limit over 80 km/h, you **must** keep out of the right lane unless you are:

- overtaking
- turning right
- making a U-turn
- avoiding an obstruction, or
- traffic is congested.

You **must** also keep out of the right lane where a Keep Left Unless Overtaking sign applies.



Signalling your moves

Before turning or changing lanes you **must** signal for long enough to give sufficient warning to other drivers and pedestrians. In 60 km/h zones, it is best to signal for at least 30 metres or about the length of two houses and driveways before turning or changing lanes.



Check that your indicator is off after you have made your turn or lane change – it may not have turned off by itself. If it is left on, other drivers will think you intend to turn.

Before moving from a stationary position at the side of the road or a parking area in the middle of the road, you **must** signal for at least five seconds.

Here are some of the ways you can signal your intentions.

1 *Using your indicators*

You **must** use your indicators when:

- turning to the right or left
- changing lanes or line of traffic
- overtaking
- making U-turns
- pulling into and out of parking spots
- leaving a continuing road which curves to the left or right
- leaving a roundabout (if practical)
- moving to the left or right from a stationary position.

Watch other vehicles' indicators and make sure they are doing what is indicated. Sometimes an indicator has not cancelled from the last turn, or has been put on too early. Make sure you indicate in such a way that your signal cannot be misleading.



Use indicators even if there is no-one else around – it's the person you cannot see who can be the most dangerous.

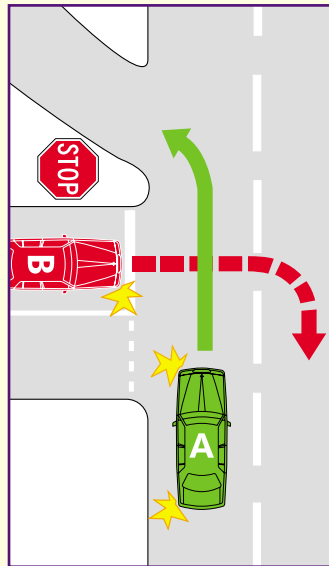


FIGURE 41

These vehicles are signalling their moves, but could be heading for trouble

2 Using your brake lights

Every time your foot touches the brake pedal, your brake lights glow, warning other drivers you are slowing down. Likewise, you will need to slow down when the brake lights on the vehicle in front of you are glowing red. So give lots of warning by braking early and slowing gradually.

3 Making eye contact

As well as watching out for indicators, you can get an idea of what another person might do by making eye contact. To make sure another driver knows you are there, try and make eye contact, especially at intersections. Look at other drivers, they may well be looking at you to see that you know they are there!



The ability to blend in with traffic comes with experience and reflects an awareness of what other drivers reasonably expect

4 *Using your headlights and tail lights*

Headlights help you to see at night. Headlights and tail lights help others to see you in poor light conditions. Your headlights and tail lights **must** be on between sunset and sunrise. They **must** also be on in hazardous weather conditions where there is reduced visibility.



If the street lights are on, your lights should also be on.

High-beam headlights

Headlights on high-beam enable you to see further. Because headlights on high beam may dazzle the oncoming driver's eyes, you **must** 'dip' them to low-beam when another vehicle is within 200 metres. You must also dip your headlights when driving 200 metres or less behind another vehicle.

Don't be dazzled by high-beam

Look to the left side of the road and drive towards the left of your lane if a car with high-beams on is approaching. If dazzled by the lights, slow down and pull over until your eyes recover.

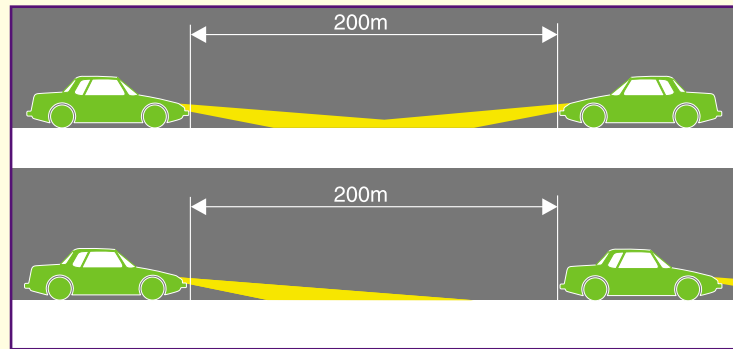


FIGURE 42

Using emergency signals

If your vehicle breaks down on the road

Make sure other drivers can see your vehicle and stop in time. If possible, pull right out of the traffic flow. If you can't get completely off the road, try to stop where people have a clear view of you and your vehicle. Don't stop just over a hill or just around a curve.



Turn on your hazard warning lights to warn other drivers. If your vehicle doesn't have hazard warning lights use your left indicator instead. Lift your bonnet or boot lid to show other drivers you are in trouble.

Driving in dangerous conditions or situations

You may use hazard warning lights if you are driving in dangerous weather conditions, such as fog, or smoke, or if you are driving slowly and likely to obstruct other vehicles or pedestrians. You **must** not operate rear fog lights unless driving in fog or hazardous weather conditions.

Warning others of your approach

You **must** only use your horn if it is necessary to warn other road users of the approach or position of your vehicle.

How to overtake safely

If someone is overtaking you, you **must** not increase your vehicle's speed.

Here are some tips to reduce your risk when overtaking:

Overtaking on a two way road

- Check the centre of the road markings (see *Road markings*, page 20). If there are double continuous white lines or double white lines with a continuous line closest to you, you **must** not overtake.
- Make sure you have a clear view of any approaching traffic and that there is enough space to overtake safely. Remember that it is hard to estimate the speed of approaching vehicles.



Always make a final headcheck before changing lanes or overtaking

- Check that the vehicle in front or behind is not also about to pull out to overtake.
- Use your right indicator to let others know you are about to overtake. A vehicle behind you may want to overtake both you and the vehicle in front.
- If you are not sure you have enough time, just wait. A few seconds or minutes could save your life.
- Never overtake if the road is not wide enough for you to stay completely on the sealed part of the road, unless you can do so at a low speed.
- When safe, accelerate and overtake the vehicle, then indicate left when safe to return to your lane.

- You **must** keep a safe distance when overtaking and not return into the line of traffic until you are a sufficient distance past the vehicle you are overtaking.



One way to know if it is safe to return to your lane is when you see both headlights of the vehicle you have overtaken in your rear view mirror.

Overtaking where there are no lane markings

When a road has no lane markings, you **must** overtake a vehicle on its right side. You **must** not overtake either a moving or stationary vehicle on the left, unless the vehicle is turning right, or making a U-turn from the centre of the

road, and has its right indicator flashing.

Overtaking where lanes are marked

When a road has lane markings, you may overtake in the left lane but remember you are less visible to the driver of the vehicle you are going past if you overtake on the left.

Overtaking where there are oncoming vehicles

Never underestimate the space and time you will need to safely overtake when there are oncoming vehicles. It is hard to judge the speed at which they are travelling. Be careful. If in doubt – don't pull out.

Overtaking where there are hills and curves

If your view is blocked, don't pull out. Remember, you **must** not overtake when there are double unbroken white lines, or double white lines with a continuous line closest to you.

Overtaking at intersections, rail crossings, shopping centre entrances and pedestrian crossings

These are never good places to overtake. Wait until you are on a clearer section of road. You **must** not overtake another vehicle stopped at a pedestrian or children's crossing.

Sharing the road with pedestrians

Pedestrians don't always do what you expect. You should watch out for them at all times. Here are some places where you should take extra care. More information on giving way to pedestrians can be found on page 30.



PEDESTRIANS include not only people on foot but also those on wheeled devices such as skateboards, rollerblades and wheelchairs.

A person pushing a bicycle is also considered to be a pedestrian.

At children's crossings

CHILDREN CROSSING

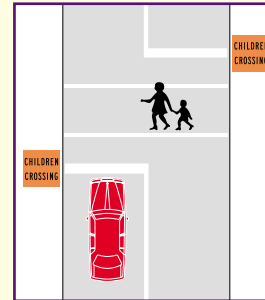


FIGURE 43

Always approach a children's crossing at a speed which will let you stop. You **must** stop at flagged children's crossings if a



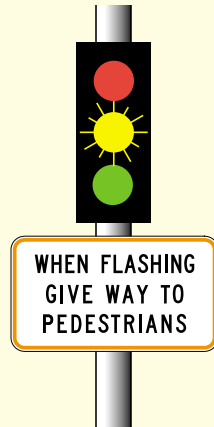
pedestrian is on or entering the crossing, even if there is no crossing supervisor present. You **must** not proceed until the pedestrian has left the crossing. You **must** also stop if a hand held Stop sign is displayed.

At intersections and traffic lights

When turning, you **must** give way to pedestrians crossing the road you are entering. Elderly people may not cross the road in the time allowed by the lights. Be patient and wait for them.

Pedestrian traffic lights are often located away from intersections to enable pedestrians to cross roads safely. These traffic lights generally operate the same as

lights at intersections. However, at some locations, drivers may proceed when the yellow light starts flashing, provided they give way to any pedestrian still on the crossing. These crossings have When Flashing Give Way To Pedestrians signs.



At pedestrian crossings

Always approach pedestrian crossings at a speed which will let you stop. Not all pedestrians look before they step onto crossings, so take care. You **must** give way to any pedestrian on a pedestrian crossing.

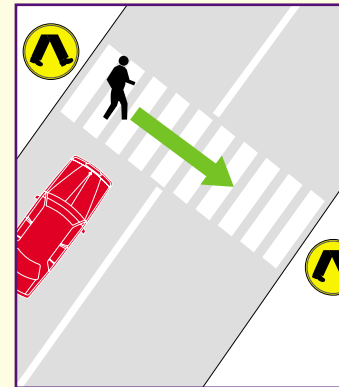


FIGURE 44

At safety zones, tram stops and bus stops

Slow down when approaching **safety zones**, tram stops and bus stops. There is always the risk of pedestrians getting off a tram or bus and crossing the road without looking.

Pedestrians are often hard to see when stepping out suddenly from behind or in front of a bus or tram. It is also a good idea when you are waiting to pick up a bus passenger to park on the same side of the road that the bus will be travelling.

More information on *Sharing the road with trams* can be found on pages 31 and 63.



A **SAFETY ZONE** is the area of the road at or near a tram stop with safety zone signs, and a traffic island or dividing strip.

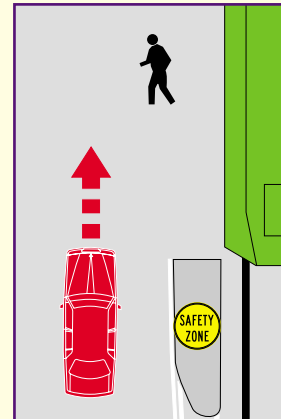


FIGURE 45

Slow down when approaching safety zones, tram stops and bus stops. There is always the risk of pedestrians getting off a tram or bus and crossing the road without looking.



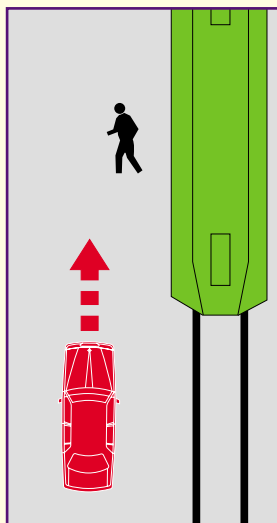


FIGURE 46

*At tram stops where there is no safety zone between you and the tram, you **must** stop and give way to all pedestrians walking to and from the kerb.*

When coming out of driveways

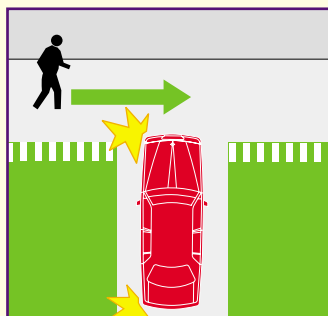


FIGURE 47

You **must** give way to any vehicles or pedestrians when leaving any private property. If you cannot see if anyone is coming, sound your horn and then drive out very slowly. Watch out for children riding on bicycles or skateboards.

On paths

You **must** give way to any vehicles or pedestrians on a path which crosses the road if you are facing a Give Way or Stop sign.

At shopping centres and car parks

At shopping centres, car parks and other busy places there is a greater chance of pedestrians crossing the road unexpectedly or stepping out from behind or between vehicles without looking. Slow down and be alert.

Near schools

Take care when driving near schools especially at times when children are arriving or leaving.



Beware of children coming out from between parked cars – they are often hard to see over the top of cars.

Where children are walking or playing

Beware of children darting out suddenly from between parked cars near playgrounds or anywhere you see children walking or playing.

Near libraries and senior citizens' clubs

Be alert and take extra care in areas where elderly people frequent, such as libraries, senior citizens' clubs and homes for the elderly.

Vision impaired

Be aware of pedestrians with poor or impaired vision who may be using a white cane or white walking stick. They may not see your vehicle clearly or be able to judge the speed of your vehicle.

Near hotels or nightclubs

Pedestrians who have been drinking may be impaired by alcohol. They may not pay attention to the traffic before crossing the road.

Wet weather

Pedestrians may hurry and take risks in the wet. Slow down and take extra care in these conditions.

Sharing the road with cyclists and motorcyclists

You need to be especially alert for cyclists and motorcyclists, as they are more at risk than drivers. Cyclists and motorcyclists have the same rights and responsibilities as you. So give them space. They need to keep well clear of parked cars in case doors are opened carelessly – so give them room. They are entitled to ride two abreast (up to 1.5 metres apart); this makes them easier to see.

Give cyclists and motorcyclists their own space. You should overtake cyclists or motorcyclists only if you can safely move to the right, leaving at least one metre clearance.





Never share the lane with cyclists or motorcyclists if you cannot leave this clearance.

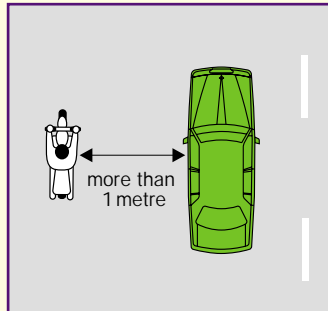


FIGURE 48

Allow at least one metre clearance between your vehicle and cyclists or motorcyclists



Motorcycles accelerate faster than cars. What looks like a safe gap in traffic, may not be if there is a motorcycle among the cars.

Watch out for cyclists and motorcyclists

Bicycles and motorcycles are smaller than cars and therefore harder to see and are more likely to be hidden in your blind spot. Keep a good lookout for them, particularly before turning or entering an intersection or changing lanes. Intersections are where most motorcycle accidents happen because vehicles turning left or right cut across in front of the rider. Riders can be hidden by

large vehicles which are overtaking them, such as trucks and buses. Only move left or turn left from behind a large vehicle when you have a clear view and are sure that the road is clear.

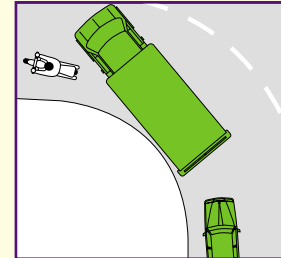


FIGURE 49



Seven out of ten motorcycle crashes happen at intersections. Remember: Always 'Look Bike'.

Sharing the road with trams

Remember these general rules about sharing the road with trams:

- Do not overtake a stopped tram. You **must** stop level with the rear of the tram and wait for people to get on and off. You may only overtake a stopped tram if there are no pedestrians on the road and you are facing a green traffic light or if a uniformed tram employee signals you through. However, you **must** not exceed 10 km/h while passing the tram.
- You **must** give way to a tram moving into or across a roundabout.

- You **must** not pass on the right of a tram unless tram tracks are at or near the far left side of the road.
- Buses travelling along tram tracks **must** be treated as trams.

Broken yellow lines next to tram lines

These lines on roads give trams priority at all times. You can cross a broken yellow line and drive on tram tracks at any time, however you **must** not delay a tram. If you want to turn right, allow the tram to pass you or keep going and turn right further on. Do not pull out in front of a tram and do not delay a tram.

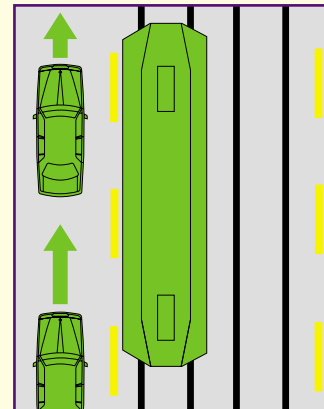


FIGURE 50

Broken yellow lines next to tram lines means the tram has priority at all times



Full time tram lanes

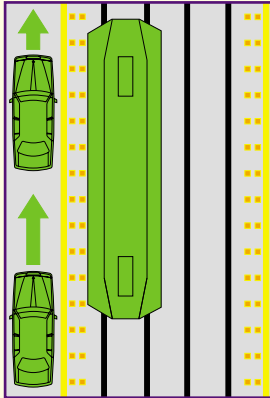


FIGURE 51

Full time tram lanes have continuous yellow lines next to the tram lines. Reflective markers are used to show that the tram lane operates at all times.

These tram lanes are in operation at all times and the tram lane sign will not show any times of operation. The same rules apply to these tram lanes as to those with only a continuous yellow line. You may enter the lane to drive across an intersection, make a right hand turn or a U-turn, however you **must** not delay a tram.

Part time tram lanes

Part time tram lanes have tram lane signs over the lane which indicate the hours of operation and a continuous yellow line to the left of the tracks. You are not allowed to travel in a **tram lane** during the times it is in operation (as shown on the tram lane signs). You may use a tram lane to enter or leave the

road, to avoid an obstruction, make a right turn or a U-turn, as long as you do not delay a tram or travel in the lane for more than 100 metres. You **must** not delay trams even during the times when the tram lane is not operating.



A **TRAM LANE** is a part of the road with tram tracks that is marked along the left side of the tracks by a continuous yellow line, and is indicated by a Tram Lane sign.

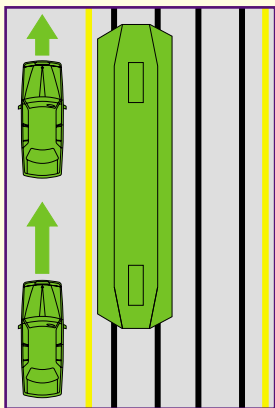


FIGURE 52

Part time tram lanes have continuous yellow lines next to the tram lines

Fairway signs

A Fairway sign may be used in addition to the Tram Lane signs and yellow lines, to warn of a section of road where trams have priority at the times marked on the Tram Lane signs.



Fairway sign Tram lane sign

Fairways and common sense

If a parked or double parked vehicle blocks your lane, you may not be able to avoid driving in the tram lane. You won't be breaking the law, but move to your own lane as soon as possible to avoid delaying a tram.



Sharing the road with buses

On some roads, buses are given special lanes. Only public buses or other vehicles as specified on the sign may use these lanes. However, other vehicles may use the lane:

- when first entering the road
- to turn left (but only 100 metres or less before the turn)
- to overtake a vehicle that is turning right or making a U-turn from the centre of the road.



Watch out for buses pulling out from the kerb

In a built-up area you **must** give way to a bus displaying a Give Way To Buses sign and signalling that it is about to pull out from the kerb into the left lane. More information on built-up areas can be found on page 10.

Sharing the road with police and emergency vehicles

You **must** get out of the way of a police or emergency vehicle when its siren is on or it is displaying red or blue flashing lights. Give way and stop if necessary (despite any other rules), even if you have a green traffic light. These vehicles have exemptions to break rules in the case of emergencies and may act unpredictably. You **must** also stop if the twin red lights outside a Fire Station or Ambulance Station are flashing.

Sharing the road with trucks and other heavy vehicles

Here are some tips about sharing the road with trucks of any size.

Blind spots – be seen, be safe

All vehicles have blind spots where the driver loses sight of vehicles around them. The blind spot is greater for truck drivers. If you cannot see the driver in the truck's rear vision mirror, the truck driver cannot see you. This should be a 'no stay spot'. Either accelerate to overtake if safe to do so, or decrease speed and pull back to where you can be seen.

Don't cut in

Trucks are longer and heavier than cars and it takes them longer to safely stop. So, when you are overtaking a truck or changing lanes, don't pull in to the empty space immediately in front of a truck. This is their 'safety margin'.



If you can't see the whole front of the truck in your rear vision mirror before you pull into the same lane, there may not be enough room for the truck to stop safely behind you if the traffic suddenly stops; it may hit you or another vehicle. Be careful and leave yourself plenty of room when turning in front of an oncoming truck.

Trucks pick up and deliver goods

Be prepared for trucks that are entering or leaving driveways, roads or loading docks to pick up and deliver goods.

Sometimes this will require extra patience and courtesy on your part to let them do so safely. Always be prepared to allow extra room for a truck to swing in or out of delivery points. If possible make eye contact with the driver to let them know you have seen them.



If you cannot see the driver in the truck's rear vision mirror, the truck driver cannot see you

The nature of trucks

Trucks are bigger and heavier than cars and slower to accelerate especially when starting, merging into traffic or going uphill. You need to allow for this if you see a truck pulling into traffic up ahead of you. Be prepared to overtake it if it's safe, or to reduce speed if necessary.

Signs on trucks

An Oversize sign, sometimes accompanied by flashing amber lights, is displayed on a truck which is longer or wider than usual. The load may even overhang into your lane. Take notice and watch what is different about it and adjust your driving to suit. Remember, amber flashing lights always indicate caution is necessary.



A Long Vehicle sign is displayed on a truck that is much longer than normal. It will take longer to overtake, and will need extra room to safely stop behind you. Make sure you can see the entire front of the truck and a little space around it in your rear vision mirror before you pull in after you overtake.

A Do Not Overtake Turning Vehicle sign tells you that the truck is at least 7.5 metres long and requires more turning room to negotiate corners, intersections or roundabouts. Trucks displaying this sign may need part or all of two lanes to turn and can legally do so (see page 42 for more information). This sign tells you that you **must not** overtake alongside a turning truck.



DO NOT OVERTAKE TURNING VEHICLE



Blind spots are increased when the truck is turning and the chances of damage to your vehicle, injury or death is increased. Stay where you can be seen so you can be safe.

Sharing the road with animals

Each year there are a number of serious crashes involving horses and other farm animals.

Horses

Slow down and watch out for horses being led or driven on the road – leave as much space as possible to allow for unexpected movements by the horse.

Never use your car horn around horses – it may startle even the most placid horse and could cause it to bolt and cause an accident.

Farm animals on roads

A Give Way To Stock sign may be displayed on country roads to enable stock such as cows or sheep to move across or along the road.



Warning signs are also displayed on the approaches to permanent stock crossings.



When a Give Way To Stock sign is displayed, you **must** travel at a safe speed that will enable you to slow down or stop to avoid a collision with any animal either at or near the sign or within the distance shown on the sign.

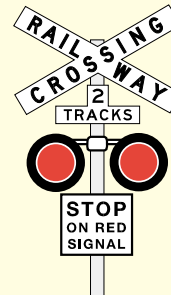
When a Stop sign is displayed at a stock crossing, you **must** stop before reaching the crossing and **must not** proceed until all animals have crossed the road.

Railway level crossings

Look and listen for trains when there is a crossing ahead. Drive slowly, at a speed which will allow you to stop if necessary.

The following information also applies to tram level crossings. Obey the tram level crossing signs.

Gates, booms and flashing lights



Where there are gates, booms, or flashing lights at railway level crossings, you **must** not cross until signals have stopped flashing and the gates or booms are fully open.

Keep clear of the train tracks

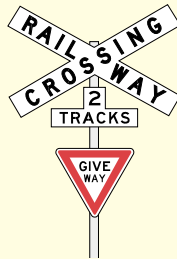
If there is traffic stopped on the other side of the railway crossing, you **must** not cross unless there is room for your vehicle on the other side – otherwise you could be stuck on the tracks in the path of an oncoming train.

Where there are no gates, booms or flashing lights

At some railway level crossings, particularly in the country, where there are no gates,

booms or flashing lights, take extra care. Slow down. Look and listen for trains in both directions. Usually there are warning signs placed well in advance of these crossings.

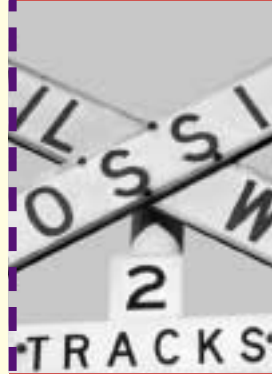
Following other signs or directions



There may be other signs you **must** obey at railway level crossings. These are usually either Give Way or Stop signs. You **should** also stop if a railway employee signals you to stop.

Look both ways for trains

If you have stopped for a train, don't move off until you have checked that another train is not following or coming the other way.



PARKING

Parking is not as easy as it seems. So that you don't cause problems for others or risk parking fines, you need to observe and interpret many types of parking signs.

! A person must not cause a hazard to any person or vehicle by opening a door of a vehicle, leaving a door of a vehicle open, or exiting a vehicle.

! Stopping or parking regulations apply even if you have stopped or parked your car and have your hazard warning lights on.

If signs say it is illegal for you to be stopping or parking at a place, having your hazard warning lights on will not change this.

There are three types of parking:

1 Parallel parking

This is the usual way to park unless signs tell you otherwise. You **must** park completely within the parking bay, in line with and close to the kerb.

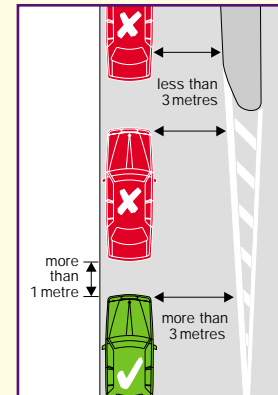


FIGURE 53

If parking bays are not marked, you **must**:

- leave one metre between you and the vehicles in front and behind
- park with your vehicle facing the direction of travel of vehicles next to where your vehicle is parked
- not unreasonably obstruct the path of other vehicles or pedestrians.

2 Angle parking

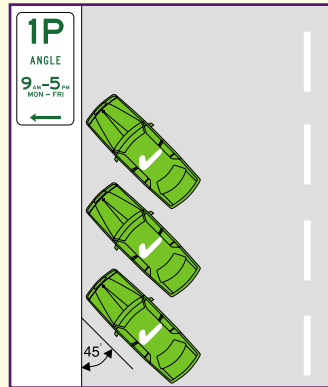


FIGURE 54

You **must** park at the angle indicated by the signs or marked bays. Where no angle is indicated by signs or marked bays, you **must** park at a 45° angle.

3 Centre of road parking

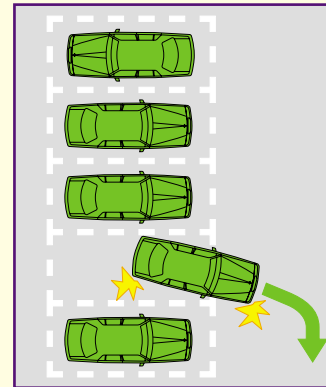


FIGURE 55

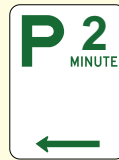
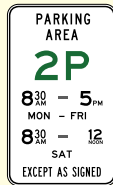
You **must** drive in forwards and drive out forwards. Do not reverse out of these spots, unless a sign indicates you may do so.



Parking control signs

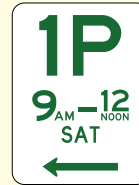
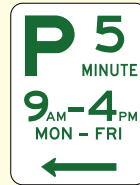
Parking signs

Parking signs tell you whether or not you can park, for how long, during which hours, and if you have to pay. Some parking signs provide more details than others.



General parking signs

A sign with the letter 'P' only means you can park without a time limit.



Any number next to the 'P' indicates the amount of time you can park. For example, the sign above left indicates a five minute parking limit, whilst the sign on the right shows a one hour limit.

The parking limits apply during the periods shown on the sign. For example, the five minute parking sign on the left means that parking is allowed for a five minute period between the

hours of 9am and 4pm from Monday to Friday. Outside that time period parking is allowed with no restrictions.

The 1P sign on the right indicates a one hour time limit during the hours of 9am to 12noon on Saturdays. Any other time you are free to park in that area with no restrictions.

Meter Parking

An individual parking meter next to your vehicle means you **must** pay as instructed on the parking sign or meter.

A group meter for the parking area nearby means you **must** purchase a ticket. Follow the instructions on the meter or sign. Some group meters print out a ticket you must display on your dashboard.

Other group meters require your parking bay number (marked on the road) and electronically record your fee paid and time allowed.

All meters are checked regularly by parking inspectors.

Parking for disabled



Parking bays with this sign or that are indicated by a road marking have been set aside to allow disabled persons easy access to places such as shops, libraries or community centres. You **must** not park in these

reserved parking spots without a valid disabled permit.

Where not to park

No Parking signs



You are allowed two minutes in a No Parking area only if you remain within three metres of the vehicle and you are picking up or dropping off passengers; otherwise if you stop, you are considered to have parked, even if you stay in the vehicle.

No Stopping signs

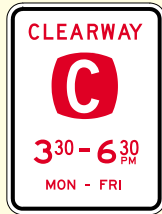
These tell you that you **must** not stop at the kerb for any reason.



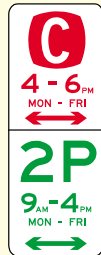


Clearways

Clearways help traffic move faster during peak times.



Clearway sign used at start of clearway



This sign is used within the clearway

On the signs the letter 'C' means clearway – you **must** not stop here for any reason during the hours and days noted on the sign.

Zone signs



Loading Zone sign

Unless another limit is specified on the sign, a loading zone is only for goods carrying vehicles with a 'C' code included on their registration labels, signed delivery and courier vehicles, trucks while dropping off or picking up

goods and public passenger vehicles or taxis that are dropping off or picking up passengers (30 minute limit or as shown on the sign).



Truck Zone sign

Only for trucks with a gross vehicle mass over 4.5 tonnes. No time limit is applied for a truck loading or unloading goods.



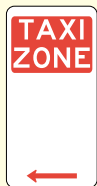
Bus Zone sign

Only for public buses.



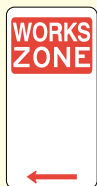
Permit Zone sign

Only for vehicles displaying a valid permit for that zone issued by the relevant authority.



Taxi Zone sign

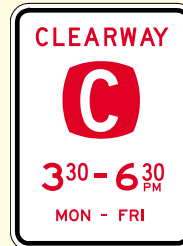
Only for taxis.



Works sign

Only for vehicles engaged in construction work in or near the zone.

Tow away zones



*Typical use of
Tow Away Zone signs*



A Tow Away zone means your vehicle will be towed away if you park at this spot during the times specified. Not only do you pay a parking fine, you also need to pay a fee to reclaim your car.

General stopping and parking rules

You **must** not leave a vehicle stationary:

- double parked
- where there is a Keep Clear road marking
- within an intersection (except on the continuous side of a continuing road of a T-intersection)
- on freeways (except in an emergency stopping lane)
- across a lane or private driveway
- where you would leave less than three metres of road clear for traffic
- on the wrong side of the road, ie. on the far right side of a two-way road
- on a footpath or reservation (unless the vehicle is a motorcycle or bicycle)
- in a bus lane
- half in, half out of a No Parking or No Stopping area
- opposite continuous double white lines
- opposite a continuous white line next to a broken white line with the continuous line closer to you

- within 20 metres of:

- both sides of an intersection with traffic lights
- the approach side of a bus stop
- the approach side of a children's crossing
- both sides of a level crossing
- the approach side of a pedestrian crossing that is not at an intersection

- within 10 metres of:

- an intersection without traffic lights
- the approach side of a tram stop sign
- the departure side of a bus stop sign
- both sides of a safety zone
- the approach side of traffic lights not at an intersection
- the departure side of a pedestrian crossing that is not at an intersection
- the departure side of a children's crossing

- within three metres of an Australia Post mail box

- within three metres of the departure side of a crossing with traffic lights not at an intersection
- within one metre of a fire hydrant
- on a curve or crest outside a built-up area unless visible for 100 metres from behind, or unless signs allow
- next to a continuous yellow edge line.





PENALTIES

All traffic offences will result in some type of penalty.

These include monetary fines, loss of your learner permit or licence, or you may be taken to court.

Many offences also attract demerit points.

In most serious cases prison sentences may be imposed.

A licence or learner permit may be suspended or cancelled as a result of:

- a Court conviction
- a Traffic Infringement Notice
- accumulation of demerit points
- action taken by VicRoads.

If a licence or learner permit is not held, a person may be disqualified from obtaining a licence or a learner permit for a specified period.

A person who has their licence or learner permit suspended or cancelled by a Court, a Traffic Infringement Notice or by VicRoads is not permitted to drive. Severe penalties exist if driving while suspended, unlicensed, or whilst disqualified (up to \$3,000 or

four months imprisonment for a first offence and mandatory imprisonment for up to two years for a second offence).

The following provides a summary of the actions that may arise from a traffic offence. Contact VicRoads for further information.

Suspend

The licence or learner permit is withdrawn for a specified period. You can not drive during this period. In most cases the original licence or learner permit is returned. However, if the suspension has resulted in a change to the conditions of the licence, a new licence will need to be issued (see *Penalties for probationary licences holders*, page 82).

Cancel

A licence or learner permit that is cancelled is no longer valid. You can not drive. Once the period of cancellation is over, you will need to apply to have your licence or learner permit reissued before you can start driving again.

Reissue of the licence or learner permit may require one or more of the following actions to be completed:

- knowledge of road law and/ or practical driving test
- an order from a Court to be relicensed
- an education course to be completed
- other requirements as specified by VicRoads.

Disqualify

Permission to apply for a licence or learner permit is withdrawn (if one is not held) as a result of a cancellation or suspension.

Imprisonment

In some cases, a Court may impose a jail term as well as a monetary fine.

Demerit points

Demerit points are one type of penalty that will be recorded against your driver licence or learner permit when you commit certain traffic offences anywhere in Australia.

Demerit points range from one to six depending on the severity of the offence. For instance, you will lose three points for exceeding the speed limit by more than 15 km/h but less than 30 km/h. VicRoads homepage at <http://www.vicroads.vic.gov.au> has a full list of offences and demerit points.

If you get 12 or more demerit points in a three year period, you may have your licence or learner permit suspended for at least three months.



You need never know about these things . . . but that's up to you and the way you decide to drive



Penalties for learner permit holders

Learner permits may be cancelled or suspended as a result of a traffic offence. This may affect the permit holder's eligibility to apply for a licence, as a learner permit must be held for a continuous period in the three or six months immediately before applying for a licence. Any break within this three or six month period means that the permit has not been held for the required time period prior to licence application.

Penalties for probationary licence holders

There are many offences which result in the suspension of a probationary licence. Some of these offences include:

- speeding
- failing to stop at a Stop sign, or failing to give way where required
- disobeying traffic control signals
- exceeding zero BAC
- crossing double white lines
- failing to display P plates
- driving a high powered vehicle

- lending your licence to another driver
- failing to stop or render assistance after an accident.

If your probationary licence is suspended, your probationary period is increased by six months plus the length of your suspension. So, if your licence was suspended for one month, your licence will be returned to you with a further seven months probationary period added to it!

If your probationary licence is cancelled, your licence will be reissued as a probationary licence for a further full three year term. However, you may first need to meet additional requirements.

If your first probationary licence is suspended or cancelled in the first 12 months, your licence will be restricted, preventing you from carrying more than one passenger in your vehicle for 12 months after you get your licence back.

Penalties for full licence holders

When a full licence is cancelled, a full licence will be reissued when all relicensing requirements have been met.

If a Court Order is required to be produced due to an alcohol or drug driving related offence, then a three year zero blood alcohol restriction will be imposed on the licence when it is reissued.

LEGAL RESPONSIBILITIES

As the holder of a licence or learner permit, there are a number of additional legal responsibilities you must fulfil.

Carry your licence

You **must** carry your probationary licence whenever you drive.

Change of name

You **must** notify VicRoads within 14 days when your name has changed.

This can only be done in person at any VicRoads Office. It must be supported by original documents along with either a photo licence or documents that prove your identity.

The following documents are acceptable for a change of name:

- Marriage Certificate
- Divorce Papers



- Deed Poll (pre 1 November 1986 in Victoria)
- Change of Name Registration (after 1 November 1986 in Victoria)
- Guardianship Order
- Adoption Paper
- Birth Certificate (issued after 26 June 2000 in Victoria shows the change of name details on the back of the certificate).

Change of address

You **must** notify VicRoads within 14 days when your residential or postal address has changed. You may change your address in one of the following ways:

1 By calling VicRoads

Telephone numbers can be found on page 93.

2 By attending in person any VicRoads Office

See the list on the inside back cover.

3 On the VicRoads homepage

<<http://www.vicroads.vic.gov.au>>

4 At a *maxi* kiosk located in most shopping centres

Notification of a disability

You **must** notify VicRoads if you have an illness or disability that may impair your ability to drive safely.

You will need to provide a current medical certificate from your treating medical practitioner that states your fitness to drive and provides details of your illness and disability. Standard medical or eyesight report forms are available from any VicRoads Office or by calling VicRoads.

Air and noise pollution

You **must** ensure any vehicle you drive meets relevant air and noise emission standards. Drivers of offending vehicles may be fined or taken to court and the owner may be issued with a notice to repair the vehicle.

CRASH RESPONSIBILITIES

If you are involved in a crash causing death or injury and do not stop and give assistance, you can be fined up to \$8000 and/or be imprisoned for up to two years. You will also lose your licence for at least two years.

If you are involved in a crash there are certain things you must do immediately after the crash.

What you must do after a crash

- Stop immediately.
- Give assistance to any injured person.
- Provide name, address, registration number details and the vehicle owner's name to the other parties involved in the crash, or their representative, and to the police (if in attendance).
- If anyone is injured and the police are not in attendance, you must report the crash to the nearest open police station.
- If there is any property damage as a result of a crash, you must report the crash to the nearest open police



station if the owner or the police are not present at the crash scene.

There are other things you should do at a crash scene to prevent other people getting hurt, and to help those people involved in the crash (see *First aid after a crash* on this page).

There are emergency phones on the side of the road on most freeways throughout Victoria. These are called VicRoads 'Help Phones' and can be used 24 hours a day for vehicle breakdowns or any other kind of emergency. The phones are directly linked to the VicRoads Traffic Control and Communications Centre.



To call an ambulance, police or fire brigade, phone 000.

To call a tow truck, phone 13 1176.

FIRST AID AFTER A CRASH

The following first aid information is based on current Red Cross teaching in line with Australian Resuscitation Council guidelines.

These guidelines are intended to provide the basic principles for an untrained person to assist at a crash site and/or attempt resuscitation.

To learn basic first aid such as EAR (Expired Airways Resuscitation) and CPR (Cardio Pulmonary Resuscitation) you will need to undertake an appropriate course.

Applying first aid after a crash

Many of us may need treatment after a road crash at some stage of our lives. Whether or not we survive until trained help arrives may well depend on somebody's willingness to give first aid.

Keeping a person's airway open and clear, making sure that they are breathing and stopping any heavy bleeding are three things you can do that may well save a life.

Try to remain calm if you are at a crash site. Remember that acting quickly is important. If necessary, call for an ambulance, or send someone to call them.

Read these simple instructions now and keep this handbook in your car. Someone else may use it to help you in an accident.

Helping victims after a crash

Ask if there is anyone trained in first aid at the crash site. If not, and you're first on the scene follow these steps:



Five ways you can help victims after a crash:

- 1 Make the crash scene safe
- 2 Check if the victim(s) are conscious
- 3 Check airway
- 4 Check breathing
- 5 Check circulation (pulse)

1 Make the crash scene safe

To avoid further crashes, protect the area. Position your car with its hazard lights flashing to warn other motorists, or use headlights to light up the scene if necessary. Send someone down the road to warn approaching traffic, and turn off the ignition in damaged vehicles.

2 Check if the victim(s) are conscious

Start with the quiet victims. Check whether they are conscious. Talk to the victim, tell them your name and reassure them. If there is no response, gently shake them or squeeze their hand to try to get a response. Check for and control any bleeding (see *Stopping heavy bleeding*, page 90).

Unconscious victims. When a person is unconscious it is vital to place them in a stable side position to assist with keeping the airway open. This must be done regardless of injury, in order to open and maintain the airway.

If the unconscious victim is inside the vehicle, if possible, gently take them out of the vehicle and place them on the ground away from danger.

Conscious victims. Make them comfortable by talking to them, tell them your name to reassure them, gather any information about the victims or crash site (this is valuable when help arrives). Keep an eye on them to ensure that they remain still.



Do not move any of the victims unless it is absolutely necessary (for example if the victim is unconscious).

However, if you have to move an injured person for safety reasons, make a neck brace with a rolled up towel or newspaper.

This will help prevent spinal damage if the neck is injured.

3 Check airway

Clear the airway. Check for loose dentures or other obstructions and remove anything in the mouth. Tilt head back gently, supporting the jaw.

4 Check breathing

You can do this by looking for the rise and fall of the chest, listening for breathing or feeling for the victim's breath on your cheek.

*If the person is unconscious and **breathing**:*

Keep a close eye on them to make sure they keep breathing.

*If the person is unconscious and **not breathing**:*

If clearing the airway has not started the victim breathing, you will need to apply mouth to mouth resuscitation (see *Mouth to mouth resuscitation*, page 91). This is best done with the victim on their back.

It can be done in the vehicle if you can't move them.

5 Check circulation (pulse)

Feel for the victim's pulse by placing two fingers on their neck (below the jawbone) or inside the wrist. If you can't feel a pulse, continue applying mouth to mouth resuscitation.



Stopping heavy bleeding

Heavy bleeding of any type can be fatal. Heavy *external bleeding* is easy to stop.

To stop external bleeding:

- Locate where the blood is coming from.
- Apply firm pressure where the blood is coming from, using whatever clean cloth is available such as an item of clothing to make a pad.
- If possible, tie the pad firmly in place.
- If the bleeding part is a limb, raise it into the air. This can slow or stop the bleeding.



Always give first aid care in ways which protect you and the victim from disease transmission.

Use protective barriers (for example disposable latex gloves or face mask) which are appropriate to the emergency.

Wash your hands thoroughly as soon as possible after giving first aid.

Avoid touching or being splashed by body fluids where possible.

In an emergency, when gloves are not available and you have to control bleeding, ask the victim to help you by applying direct pressure, or place a dressing or other clean, dry cloth between your hand and the wound.

Mouth to mouth resuscitation



- 1 Tilt the head back firmly and gently to open the airway
- 2 Take a breath



If performing mouth to mouth resuscitation on:

- children – use minimal head tilt.
- infants – no head tilt.



- 3 Cover the victim's mouth with your mouth

Use your cheek or pinch to seal the nose. Use a mask if available.

- 4 Breathe firmly into the mouth

Make sure the victim's chest rises.

- 5 Remove your mouth

Make sure the chest falls.



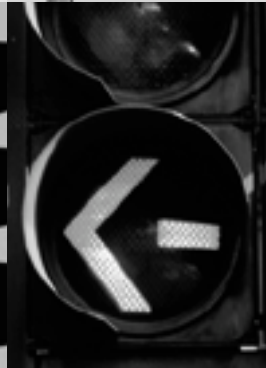
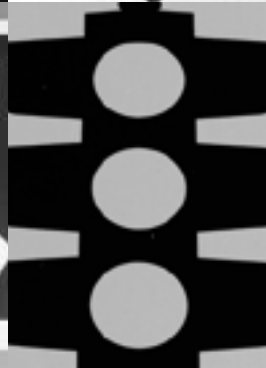
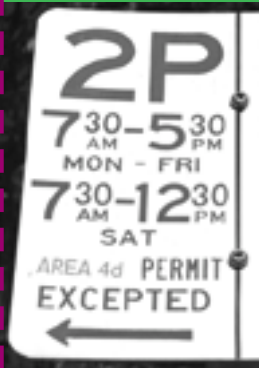
- 6 Give five full breaths within 10 seconds

Then check to see if breathing has restarted. Look for the rise and fall of the chest. Listen for breathing sounds. Feel for breaths on the cheek and for ribcage movement.

- 7 If breathing hasn't restarted

Continue the process at your normal breathing rate or at the rate of 15 breaths in each minute for an adult and 20 breaths for a child or infant.





Resources to help you

VicRoads

Telephone enquiries

All registration and driver licence enquiries and test bookings.

Monday to Saturday
8.30am – 5.00pm

Tel: 13 1171 *Victorian calls*

Tel: 1800 814 762 *Interstate calls*

Tel: +61 3 9854 2666
Overseas calls

Tel: 1300 652 321 *If you have impaired hearing or speech, and use a Telephone Typewriter (TTY)*

VicRoads Bookshop

The Bookshop distributes information about obtaining and renewing a driver licence, registering a vehicle or renewing vehicle registration, as well as information on road and vehicle safety and drink driving. It also sells road safety education kits and books for students and prospective drivers.

Ground Floor
60 Denmark Street
Kew Vic 3101

Tel: (03) 9854 2049
and (03) 9854 2782

Fax: (03) 9854 2468

Email:
bookshop@roads.vic.gov.au

VicRoads web site

VicRoads web site provides information about VicRoads services, products and strategies.

<<http://www.vicroads.vic.gov.au>>

VicRoads Traffic Control and Communication Centre

This centre provides information and assistance with:

- emergency road conditions
- freeway breakdowns
- traffic accident reports
- traffic light faults.

Tel: 13 1170



**VicRoads Road Safety,
Traffic and Road
Management Services**

For information and
assistance with:

- unsafe locations or stretches of road
- road safety
- current road rules.

Monday to Friday
8.30am – 5.00pm

Tel: 13 1174

**VicRoads Vehicle
Securities Register**

If you are thinking about buying a second hand vehicle privately, you should contact the Vehicle Securities Register to check whether:

- there is money owing on the vehicle, and
- the vehicle is recorded as stolen.

For a small fee, you can also obtain a Vehicle Securities Register certificate which provides legal protection against repossession.

Tel: 13 1171

maxi

maxi provides a fast and electronic way to pay bills, access services, and get information 24 hours a day.

<<http://www.maxi.com.au>>

Victoria Police

For information and assistance with road law issues.

Tel: 03 9247 5779

<<http://www.police.vic.gov.au>>

Information Victoria Bookshop

Retail sales of Government legislation, reports, maps and specialist publications.

356 Collins Street
Melbourne Vic 3000

Tel: 1300 366 356

<<http://www.information.vic.gov.au>>

Citylink

Citylink is Melbourne's fully electronic toll way. To use Citylink, you'll need an e-TAG, Day Pass or Tulla Pass. Call Citylink to arrange your e-TAG or Day Pass, or visit the website at <<http://www.transurban.com.au>>

Tel: 13 2629

Notes

VicRoads Registration and Licensing Offices

METROPOLITAN OFFICES

BROADMEADOWS

Cnr Pearcedale
Parade and
Johnstone Street
Broadmeadows 3047

BURWOOD EAST

12 Lakeside Drive
Burwood East 3151

CAMBERWELL

3 Prospect Hill Road
Camberwell 3124

CARLTON

459 Lygon Street
Carlton 3053

DANDENONG

16 Princes Highway
Doveton 3177

DROMANA

Shop 11
Dromana Central
143 Point Nepean Rd
Dromana 3936

FRANKSTON

71 Hartnett Drive
Seaford 3198

GREENSBOROUGH

Diamond Village
Shopping Centre
Cnr Nepean Street
and Medbury Avenue
Watsonia 3087

MELTON

Shire Offices
232 High Street
Melton 3337

OAKLEIGH SOUTH

1 Eskay Road
South Oakleigh 3167

SUNBURY

Shire Offices
36 Macedon Street
Sunbury 3429

SUNSHINE

499 Ballarat Road
Sunshine 3020

WERRIBEE

11 Riverside Avenue
Werribee 3030

COUNTRY OFFICES

ARARAT

Shop 2
56 High Street
Ararat 3377

BAIRNSDALE

535 Princes Highway
Bairnsdale 3875

BALLARAT

88 Learmonth Road
Wendouree 3355

BENALLA

50-52 Clarke Street
Benalla 3672

BENDIGO

57 Lansell Street
Bendigo 3550

COBRAM

Shire Offices
44 Station Street
Cobram 3644

COLAC

Princes Hwy
Colac West 3250

ECHUCA

5 Mundarra Road
Echuca 3564

GEELONG

Fyans Street
Geelong South 3220

HAMILTON

Riley Street
Hamilton 3300

HORSHAM

14 O'Callaghans Pde
Horsham 3400

KYNETON

2 Beauchamp Street
Kyneton 3444

LEONGATHA

Anderson Street
Leongatha 3953

MARYBOROUGH

Shire Offices
Neill Street
Maryborough 3465

MILDURA

109-111 Orange Ave
Mildura 3500

MORWELL

Princes Drive
Morwell 3840

PORTLAND

Percy Street
Portland 3305

SALE

28 Princes Highway
Sale 3850

SEYMOUR

5 Crawford Street
Seymour 3660

SHEPPARTON

231-239 Corio Street
Shepparton 3630

SWAN HILL

70 Nyah Road
Swan Hill 3585

WANGARATTA

6-8 Handley Street
Wangaratta 3677

WARRAGUL

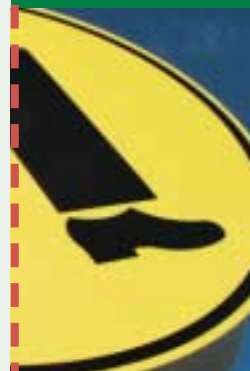
Unit 5
131 North Road
Warragul 3820

WARRNAMBOOL

29 Jamieson Street
Warrnambool 3280

WODONGA

82-86 Elgin Street
Wodonga 3690



ALL TELEPHONE ENQUIRIES

13 1171

8.30am to 5.00pm
Monday to Saturday

Registration and Licensing Office Trading Hours

8.30am to 4.30pm
Monday to Thursday
8.30am to 5.00pm
Friday



VicRoads Publication Number 00875



Quality
Endorsed
Company



www.vicroads.vic.gov.au